

EXECUTIVE SUMMARY REPORT

PROVIDED BY FINDORFF



MIDDLETON-CROSS PLAINS AREA SCHOOL DISTRICT
BUILDING FOR OUR FUTURE

POPE FARM ELEMENTARY SCHOOL | 06.05.2020

What's New?

Outside, the binder course asphalt base has now been poured along Schewe Road! Curb and gutter is poured on the school lot. Light poles have been erected throughout the school lot as well. The green and black metal panels are completely installed on the west, east, and south sides of the building's exterior.

Inside, the kindergarten locker cubbies have been completed and the third grade cubbies are underway. Swinging and overhead doors continue to be installed. The electrician continues to install lights throughout the building, and the ceiling subcontractor is installing ceiling grids and tile. Sinks and water fountains continue to be added on wall tile in the building. The polished concrete subcontractor added the colored stripes to the atrium concrete, completing the last of the polished concrete. The flooring subcontractor is on-site adding carpet tile to classrooms and common areas beginning on the second floor.



DRONE FOOTAGE

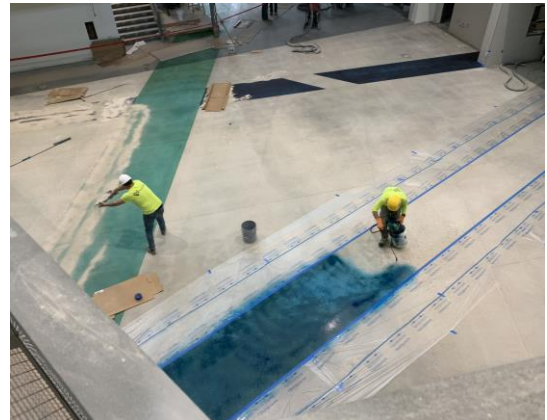
Click on the image to check out the latest progress!

The Past Week:

- School Lot Curb and Gutter
- Light Poles Set in the School Lot
- Atrium Polished Concrete Completed
- Carpeting Kindergarten Common Area

Coming Up in the Week Ahead:

- Mechanical System Testing and Start-Up
- School Lot Asphalt Binder Course
- Installation of Main Entrance Doors
- Office and LMC Reception Desks



Colored stripes being added to the polished concrete.



DID YOU KNOW?

Pouring asphalt on roads is a multi-step process. First, the road is brought to the desired grade. Then, there is a process called "fine grading" in which small gravel rocks are used to smooth out the desired grade. Next, the binder coarse asphalt is poured over the road. And finally, after the binder course has settled, the surface course is poured over the road area to give it a smoother finish for the road users.

QUESTIONS?

Please contact Project Manager Tanner Davis at tdavis@findorff.com

Findorff

EXECUTIVE SUMMARY REPORT



POPE FARM ELEMENTARY SCHOOL | 06.05.2020

Page 2



More equipment has been added to the playground.



Binder course asphalt has been poured over the Schewe Road addition.



The curb and gutter has been poured over much of the school lot and light poles have been erected.

QUESTIONS?

Please contact Project Manager Tanner Davis at tdavis@findorff.com

Findorff



Carpeting has been placed in the kindergarten common area.



Interior swinging doors and borrowed lite glass added to an interior frame.



First grade classroom with carpet tile on the floor.



Water fountains and hand washing sinks outside of the bathroom in the second floor atrium.

QUESTIONS?

Please contact Project Manager Tanner Davis at tdavis@findorff.com

Findorff