

EXECUTIVE SUMMARY REPORT

PROVIDED BY FINDORFF



MIDDLETON-CROSS PLAINS AREA SCHOOL DISTRICT
BUILDING FOR OUR FUTURE

PARK ELEMENTARY SCHOOL | 06.05.2020

What's New?

In the interior remodel spaces, electrical rough-ins, carpentry blocking, and mechanical work has been occurring in preparation for the drywall to be hung. The new interior CMU wall was laid in front of the new conference room. The CMU wall in the new receiving room is also nearing completion.

In the new addition, great progress has been made. The western CMU wall was completed. All steel trusses have been set in the new addition, and metal decking has been attached to these trusses. The stairs connecting the existing building to the new addition have been poured, and the ramp has been formed in preparation to be poured as well. Slab-on-grade concrete has been poured in the new kitchen and bathrooms. A waterproofing barrier has been laid in the new mechanical room in preparation for slab-on-grade. A concrete footing was poured along where the entrance to the new receiving dock will be.



DRONE FOOTAGE

Click on the image to check out the latest progress!

The Past Week:

- Metal Decking Over Cafeteria Space
- Finishing Setting Trusses
- Exterior Drywall Studs
- Remodel Area CMU Wall

Coming Up in the Week Ahead:

- Final Regrading and Seeding of West Field
- Drywall in the Interior Remodel
- Continuing Slab-On-Grade
- Roofing on the New Addition



Exterior studs set on the north end of the building. Metal decking has been placed above the cafeteria on the steel trusses.



DID YOU KNOW?

Over 70% of the buildings in the world are made of masonry! Although many builders and architects choose masonry for design versatility, masonry blocks are also very environmentally friendly and durable. These blocks are resistant to fire, earthquakes, and sound preventing them from melting, burning, or warping in size. Blocks are made mainly of natural ingredients such as sand, cement, and aggregate.

QUESTIONS?

Please contact Project Manager Jacob Jankowski at jjankowski@findorff.com

Findorff

EXECUTIVE SUMMARY REPORT



PARK ELEMENTARY SCHOOL | 06.05.2020

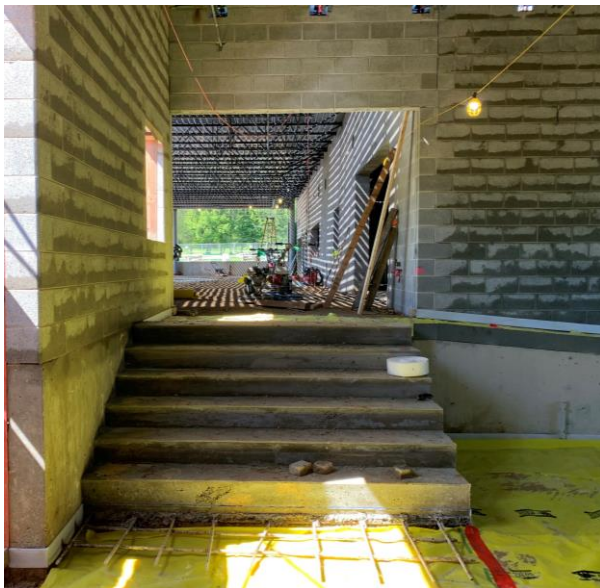
Page 2



Interior CMU wall set in front of the new office and conference room spaces.



Blocking and electrical piping place inside of the stud framing for the new offices and conference room.



The stairway and the ramp to the new addition were formed and poured.



Slab-on-grade placed in the new kitchen and bathroom areas.

QUESTIONS?

Please contact Project Manager Jacob Jankowski at jjankowski@findorff.com

Findorff