

---

# EXECUTIVE SUMMARY REPORT

## MIDDLETON-CROSS PLAINS POPE FARM ELEMENTARY SCHOOL

April 10<sup>th</sup>, 2020

---

### What's New?

The site is rapidly preparing for curb and gutter which will be closely followed by asphalt. Also, the retaining wall on the south side of the building has been completed and the larger metal panels are being installed on the first floor near the office windows, and is being placed on the exterior of the clerestory. The steel studs and drywall team is working on finishing the exterior canopies, as well as finishing interior drywalling the atrium area and the stairs.

The gym flooring has now been completely laid. Sanding on the floor will begin next week and then sealing and striping. This process will take roughly 2 weeks. The carpenters are also continuing to add more cabinets and countertops to classrooms, as well as colored decorative wall paneling to the hallways. Ceiling grid is finished in the kindergarten, first, and second grade classrooms, and some of the hallways between these classrooms. The electricians are putting up lights in painted classrooms as well.

### The Weeks Ahead

- Curb and Gutter
- Sanding and Finishing Gym Floor
- Epoxy Floors in Bathrooms and Kitchen
- Markerboard and Tackboards Arriving
- Concrete Finishing in the Atrium

### The Past Few Weeks

- Finished the Boulder Retaining Wall
- Tiling in the Kindergarten Bathrooms
- Laying All the Wood Flooring in Gym
- Finishing the North Stairwell
- Large LMC Window Installed



**Above:** The large LMC window has been installed. Large green metal panels added to the side of the building by the offices.



**Right:** Metal paneling added to the side of the clerestory roof.



Many people have asked how the trade workers are doing, our number one goal is to provide a safe work environment for all employees. We continue to monitor the health and safety of all employees, especially our field employees. We are continually updating our jobsite protocols to adhere to both CDC and DHS guidelines. It's a delicate balance, therefore we are encouraging employees to make informed decisions, and choose solutions best suited for their situation.

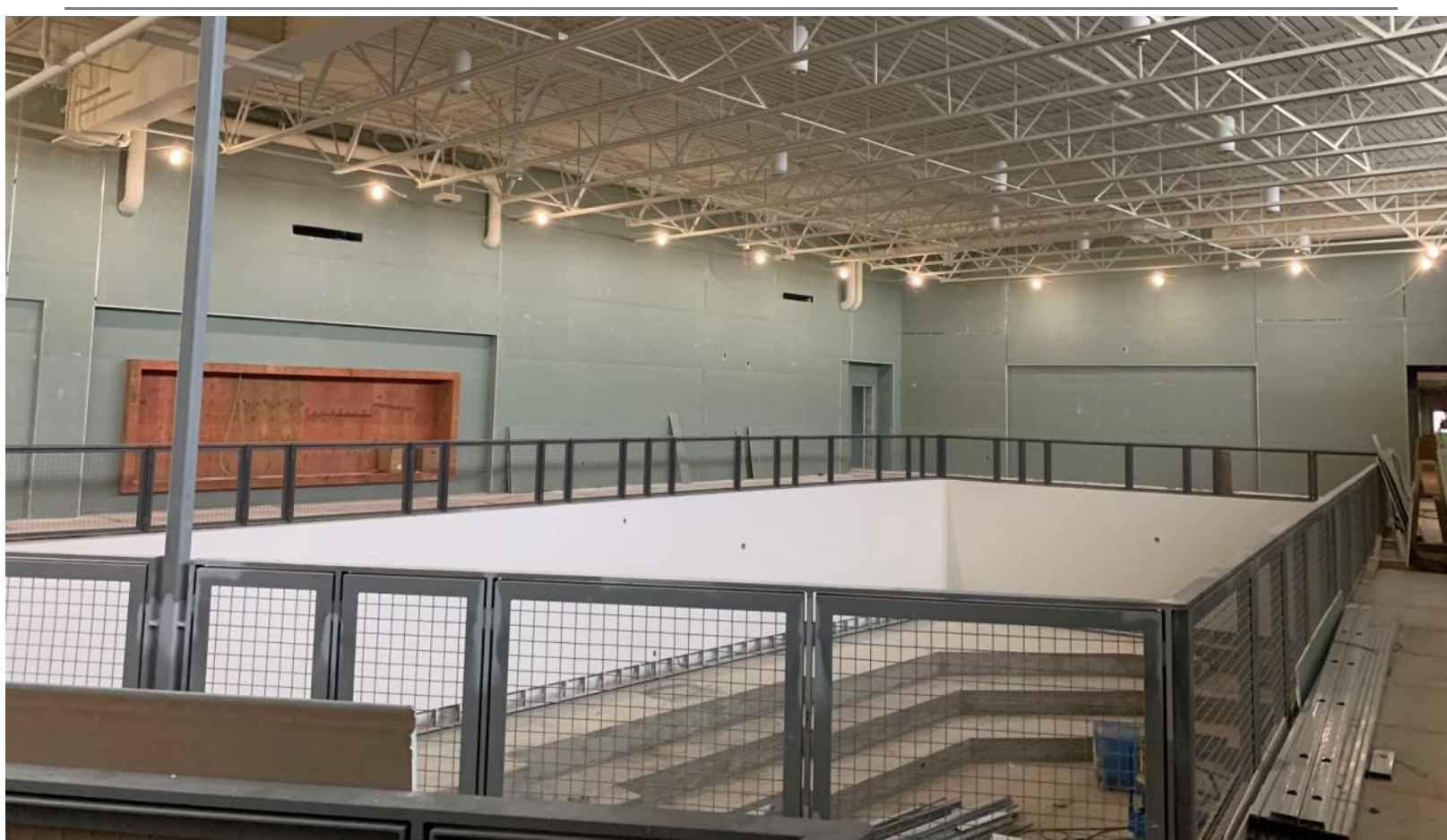
---

# EXECUTIVE SUMMARY REPORT

## MIDDLETON-CROSS PLAINS POPE FARM ELEMENTARY SCHOOL

April 10<sup>th</sup>, 2020

---



*Above: Drywall has been added to the atrium around the 2<sup>nd</sup> floor walkway.*

*Below: The wood flooring for the gym has been laid..*



*Above: A cabinet, countertop, and tile back splash all installed in a kindergarten classroom.*

---

**Site Drone Video:** [https://drive.google.com/open?id=1xhK\\_N5gB0NEV5dJN6nNQj3R\\_93FW48aR](https://drive.google.com/open?id=1xhK_N5gB0NEV5dJN6nNQj3R_93FW48aR)

---

**Questions? Contact:** Project Manager, Tanner Davis [tdavis@findorff.com](mailto:tdavis@findorff.com)

**Findorff**