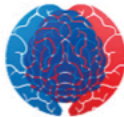




DEPARTMENT OF
Psychiatry

UNIVERSITY OF WISCONSIN
SCHOOL OF MEDICINE AND PUBLIC HEALTH



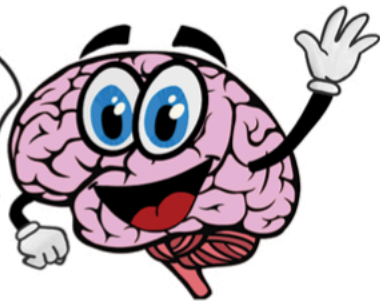
**HealthEmotions
Research Institute**
University of Wisconsin

Adaptive Brains- Learning about Emotions

ABLE Study

Paid Research Opportunity for Kids

Would your child like to
learn more about emotions
and the brain?



Our research group is taking many precautions related to COVID-19, including the use of remote data collection methods, repeated health screenings, and physical distancing and frequent cleaning/sanitizing for in-office study visits.

The UW Department of Psychiatry and the HealthEmotions Research Institute are looking for children, ages **8 to 12**, to participate in a paid research study. Children who are currently receiving treatment for anxiety or other emotional issues are not eligible to participate. Children who have braces are also not eligible to participate.

Earn a \$10 gift card for completing a brief online survey at our website:
<https://go.wisc.edu/ablestudy>.

Children who qualify for the full study may receive up to \$250 over multiple study sessions that include MRI brain scans, clinical assessment, behavioral tasks, and questionnaires about mood and health. Please visit <https://go.wisc.edu/ablestudy> for more information or call the HealthEmotions Research Institute at (608) 263-2338.

This is not a school-sponsored activity and the Middleton-Cross Plains Area School District does not provide support or endorsement of this program/activity. It has neither reviewed nor approved the program, personnel, or activities announced in this brochure/flyer. Permission to distribute this material must not be considered a recommendation or endorsement by the school district.