



Middleton–Cross Plains
Area School District
inclusive. innovative. inspiring.

BOUNDARY ADVISORY COMMITTEE

Transportation Presentation

Jeff Fedler

Jessica Schwartz





TRANSPORTATION INFORMATION

- The District runs a comprehensive, district-owned transportation operation.
 - Regular home to school routes
 - Specialized home to school routes
 - Field Trips
- This presentation will focus on regular home to school routes.



TRANSPORTATION INFORMATION

- Transportation Department
 - 5 Office staff
 - 3 Mechanics staff
 - 60 Bus drivers
- Regular Routes – 2,574 miles per day.
 - Park – 5 Routes
 - Sauk Trail – 3 Routes
 - Sunset Ridge – 9 Routes
 - West Middleton – 9 Routes
 - Elm Lawn – 4 Routes
 - Northside – 4 Routes
 - Glacier Creek – 16 Routes
 - Kromery – 12 Routes
 - MHS/CSCS – 18 Routes



TRANSPORTATION ELIGIBILITY

- State only requires/partially funds transportation for students residing over 2.0 miles from school or within an approved Unusually Hazardous Transportation area.
- District provides transportation for all students residing 1.1 miles and greater from school. In Cross Plains all students .5 miles and over receive transportation from School (Admin Policy 751).
- Reside within the District and attendance area of assigned school.



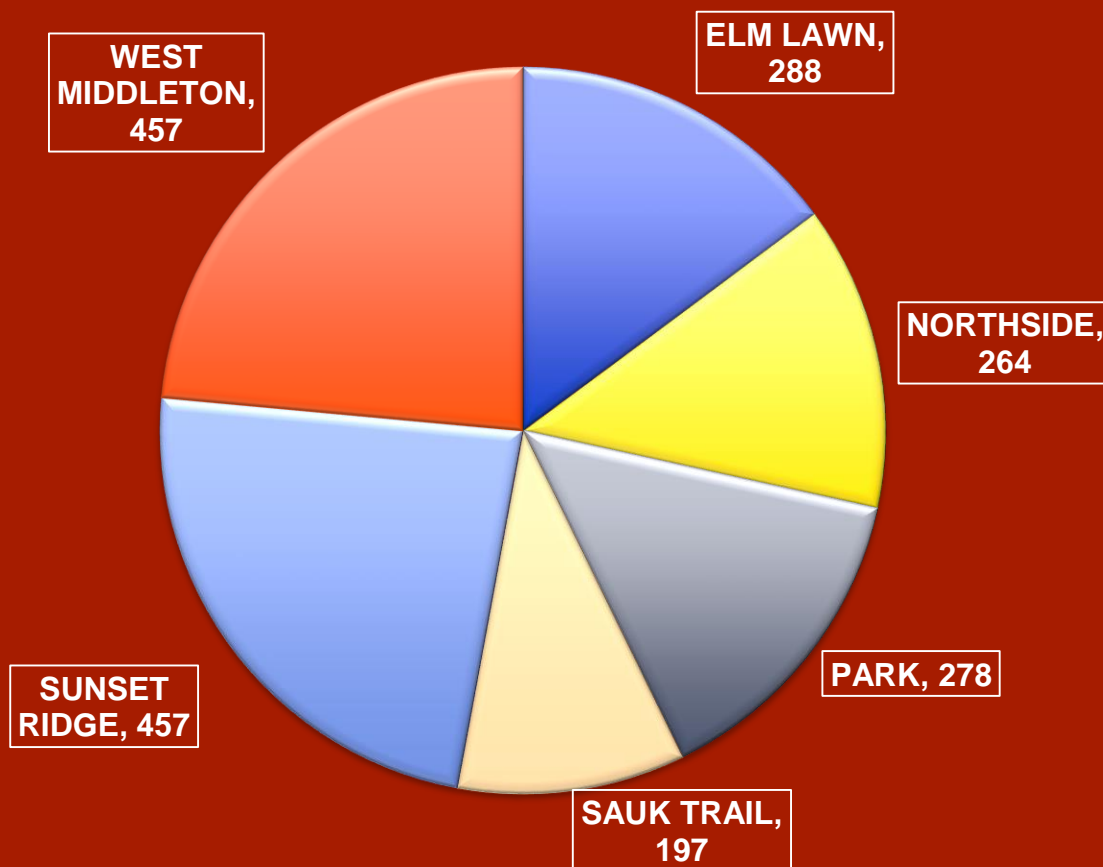
RIDE TIME & WALKING DISTANCE TO A STOP

- There is NO state imposed limit on the amount of time a student can ride a bus.
- District's goal is that a one-way ride not exceed 60 minutes. Our typical one-way ride averages 30 minutes.
- District policy target limit on walking distance to Bus stops is 0.3 miles for students fourth grade and under. Middle and High School Students walking distance is 0.5 to a stop location.



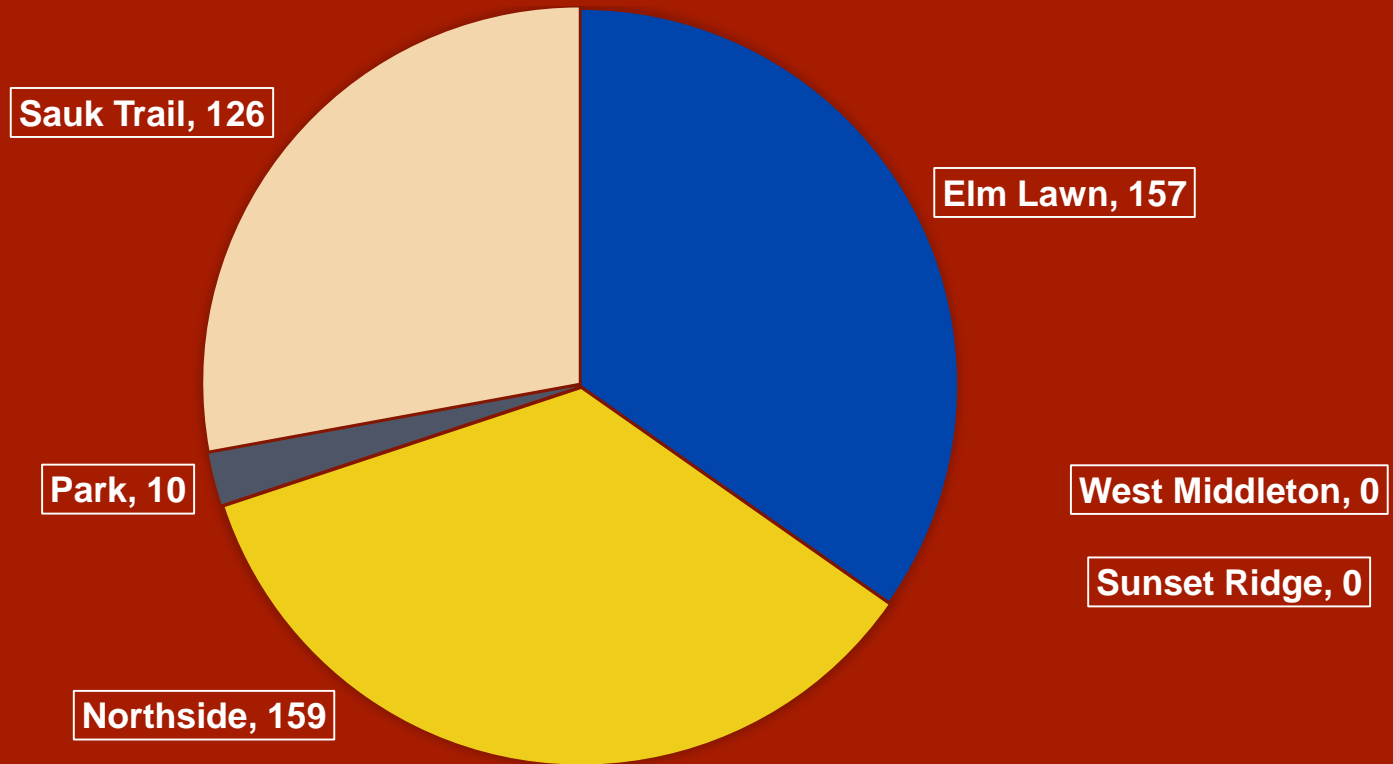
Middleton–Cross Plains
Area School District
inclusive. innovative. inspiring.

STUDENT RIDERS PER SCHOOL



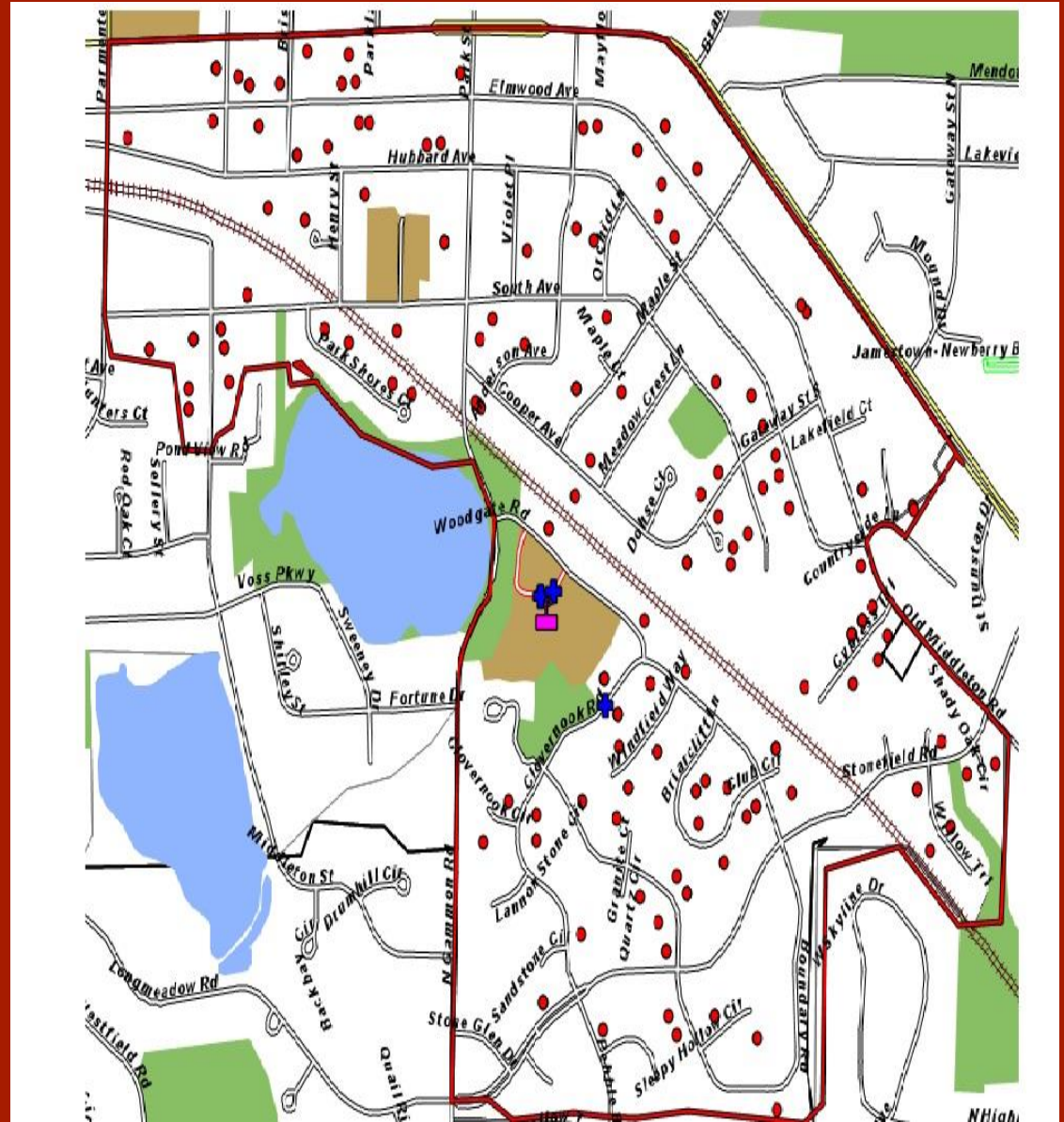


STUDENTS ASSIGNED TO WALK



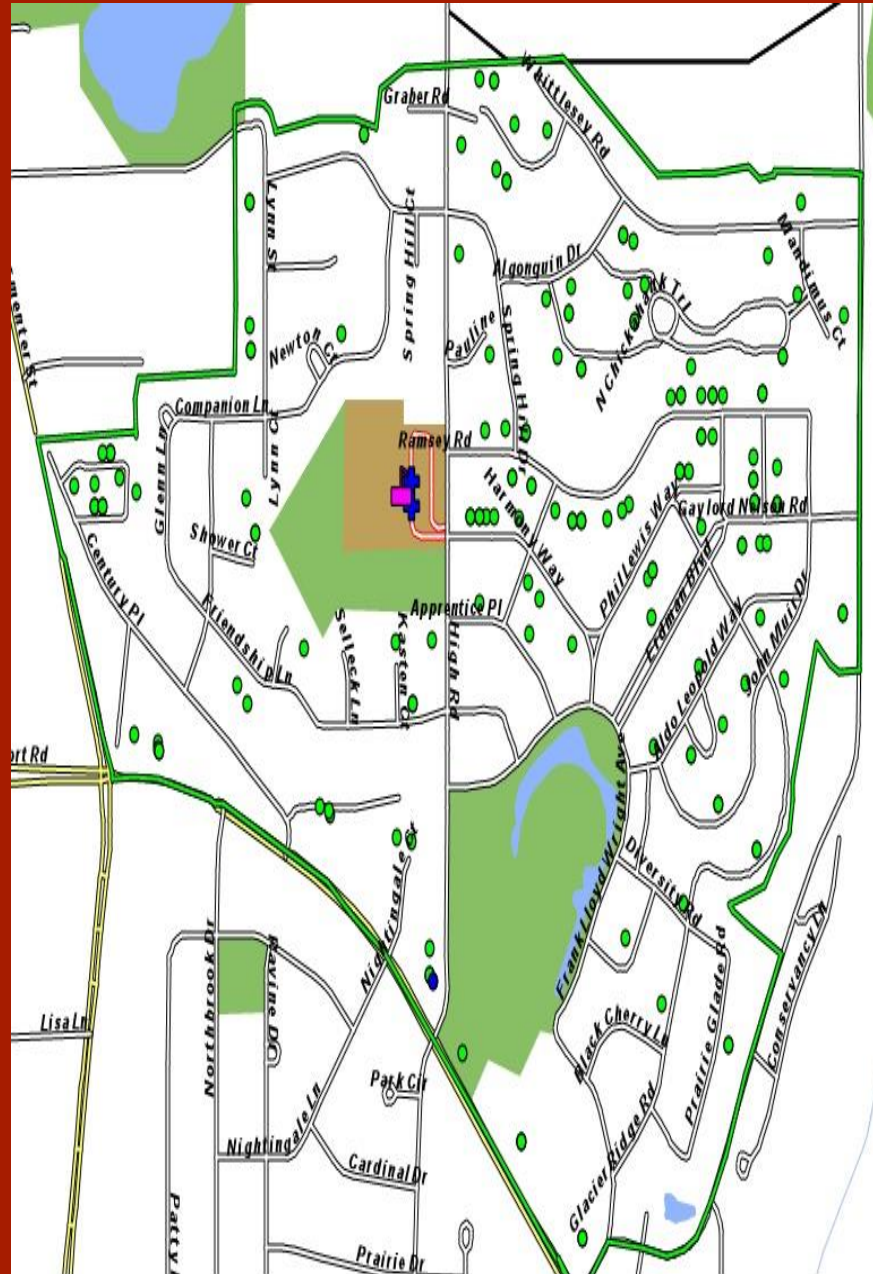
Middleton–Cross Plains
Area School District
inclusive. innovative. inspiring.

Elm Lawn Walk Zone

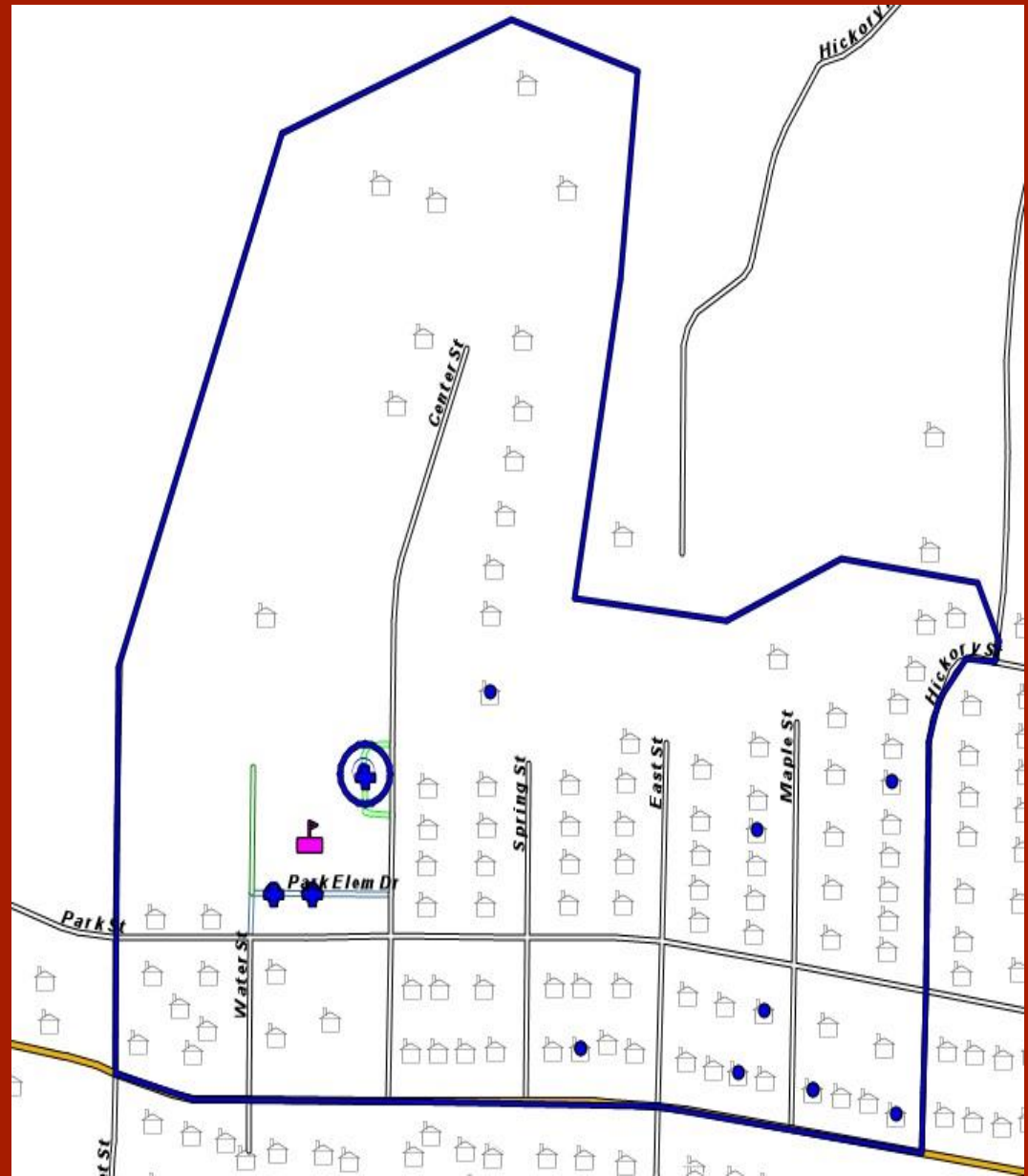


Middleton–Cross Plains
Area School District
inclusive. innovative. inspiring.

Northside Walk Zone

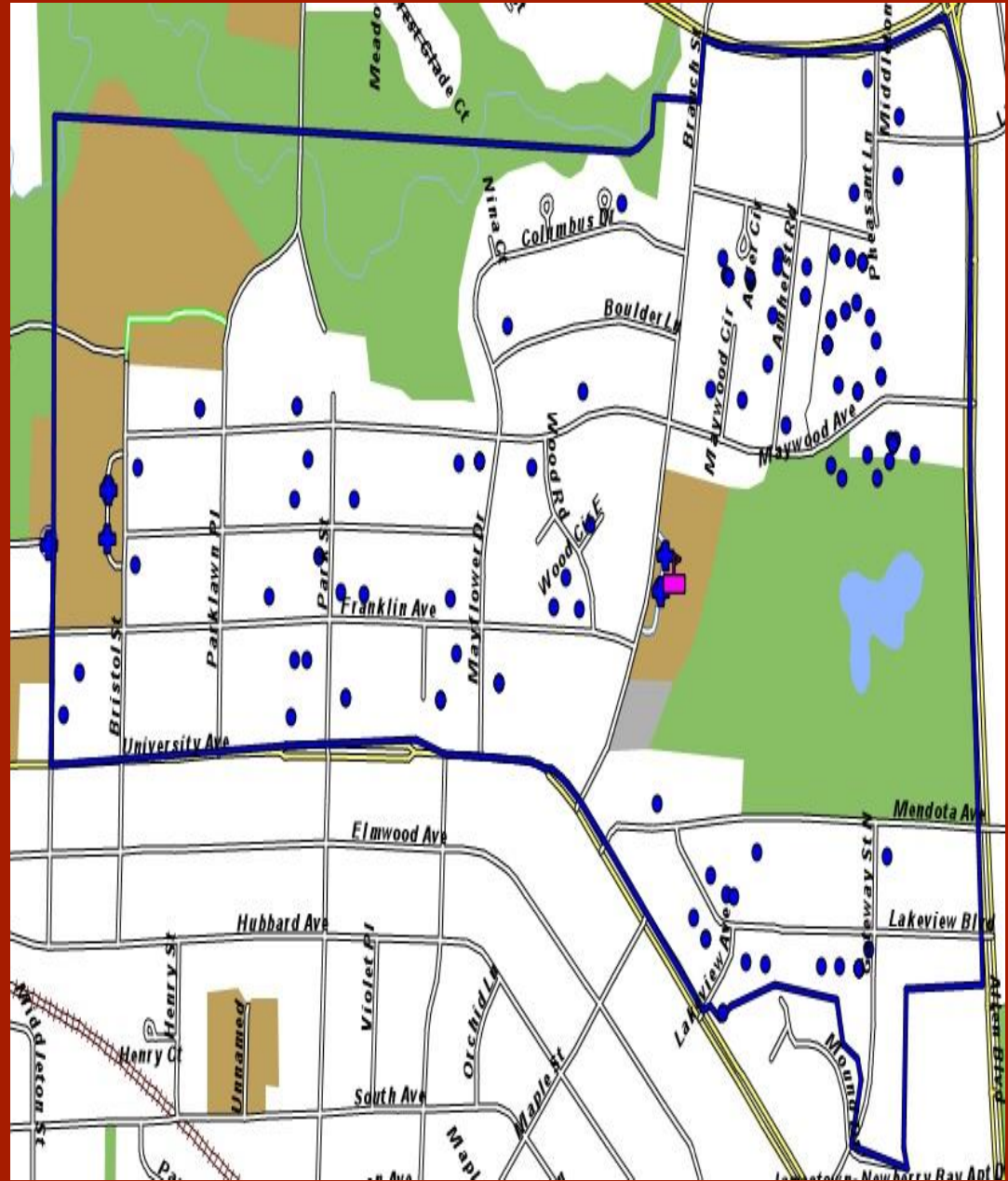


Park Walk Zone



Middleton–Cross Plains
Area School District
inclusive. innovative. inspiring.

Sauk Trail Walk Zone





ROUTING PROCESS

- Adjust attendance boundaries in routing software
- Roll over grade: 4K=>Elem, 4th=> MS
- Update student school assignments
- Identify Route(s) to switch based on enrollment changes
- Assign students to existing stops
- Delete unused stops
- Add stops for unrouted students
- Rework routes for timing and capacity



ROUTING CONSIDERATIONS

- Proximity – Adjacent to the boundary
- Compact – High student density
- Walk Zones – avoid busing in areas identified as walk zones
- Route Efficiency – take advantage of existing routes



Middleton–Cross Plains
Area School District
inclusive. innovative. inspiring.

THANK YOU

- Thank you for your time tonight and your willingness to participate in the Elementary Boundary Advisory Committee.
- Questions?
- Contact Info:
 - Jeff Fedler or Jessica Schwartz at:
 - mcp-bus@mcpasd.k12.wi.us
 - 608-829-2365