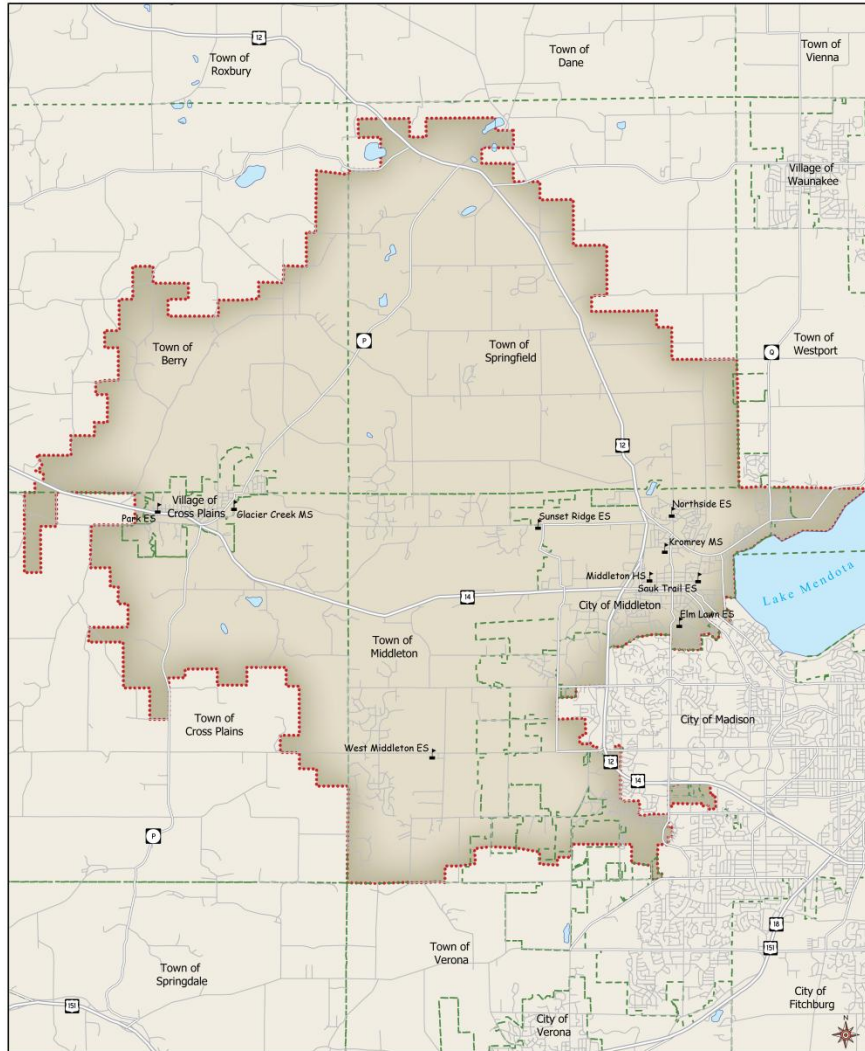


# Planning for the Schools of Tomorrow

---



## School Enrollment Projections Series Middleton-Cross Plains Area School District

November 2012

Page Intentionally Left Blank



# Table of Contents

Executive Summary.....	iv
Introduction .....	1
District Enrollment History .....	1
Kindergarten Enrollment Trends .....	5
Birth Trends and Projections .....	7
Population Estimates and Projections .....	8
Residential Development.....	12
Method .....	15
School Enrollment Projections.....	17
Baseline Projection.....	17
5 Year Trend Projection.....	18
2 Year “Trend” Projection .....	19
Kindergarten Trend Projection.....	20
Comparison of Projection Models .....	21
Past Projections Analysis .....	27
Conclusions .....	30



## Executive Summary

---

The district-wide resident enrollment for the Middleton-Cross Plains Area School District for the current 2012-2013 school year is 5,993 students. This executive summary provides important key points that can be found in the full enrollment projections report.

- Last year's projections under projected K-12 enrollment by 0.56% to 2.4%. The most reliable model was the Baseline model projecting 5,960.
- The district has experienced an enrollment increase of 1.2% annually over the last ten years. This is largely due to increases in grades K-5 enrollment at almost 2%. The middle school and high school grades have also seen significant increases in enrollment.
- Kindergarten enrollment has increased over the long-term (last 10 years) and more recently (last 5 years). Birth trends also indicate that the district will likely see continued increases in future births. However, recent birth trends indicate steady births.
- The district area saw a drop in new home construction starting in 2004. However, over the last four years single family home construction has increased slightly, averaging 76 homes per year.
- Grade progression ratios used for the projection models are above one indicating an in-migration of grades K-7 students. The B:K ratio continues to be high mostly due to City of Madison births that are not included. Many of the high school grade progression ratios are below one indicating an out-migration of grades 9-12 students although this is a normal occurrence with the high school grades.
- All four models project overall K-12 enrollment increases in the foreseeable future. The Baseline model indicates the greatest projected increase of 9.4% in five years, while the 2 Year "Trend" model projects less of an increase in enrollment (5% in five years).
- All models forecast increasing K-5 enrollment over the next four to five years. Middle school grades will experience declining enrollment next year followed by increasing enrollment. High school grades will see steady enrollment in the near term followed by ever increasing enrollment.
- District-level projections should be viewed as having high reliability over the next few years, but increasingly for the lower elementary grades, actual enrollment total will likely deviate from the projection models over time.



## Introduction

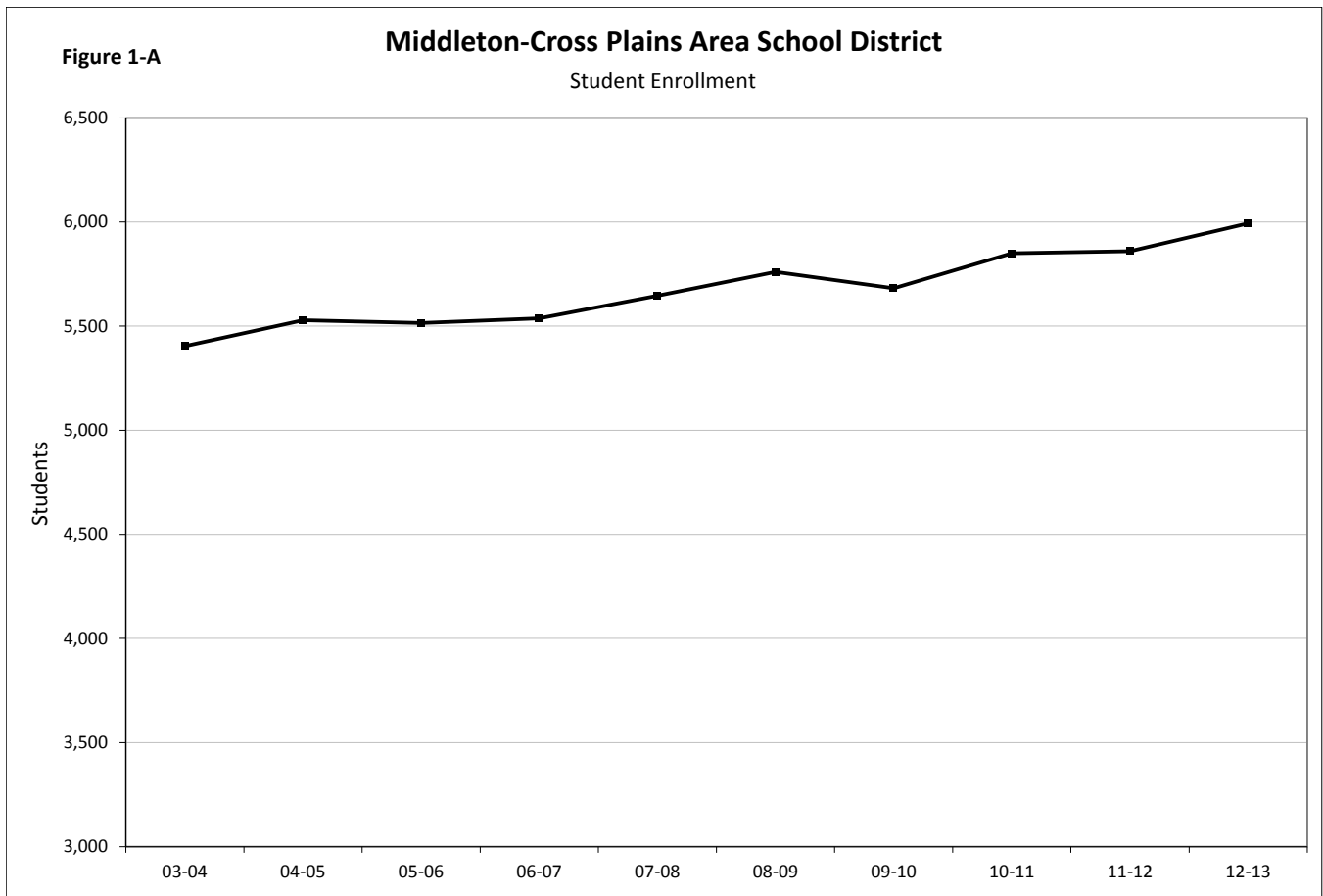
---

This report offers a summary of the Enrollment Projections Analysis completed for the Middleton-Cross Plains Area School District by the Applied Population Laboratory, University of Wisconsin-Madison. Ten year projections are provided for the district as a whole, and individually for each grade and grade grouping. The projection process uses a combination of historical enrollment data, birth trends and projections, housing starts data, and population trends and projections to create reasonable assumptions about future growth scenarios and the likely impact on the school district.

## District Enrollment History

---

Figure 1-A and Tables 1 and 2 display the last ten years of enrollment history in the Middleton-Cross Plains Area School District. The district enrollment history includes resident-in district students, but does not include resident 21st Century eSchool students and open enrollment "in" or open enrollment "out" students.



**TABLE 1**  
**Student Enrollment**  
**Middleton-Cross Plains Area School District**

	SCHOOL YEAR									
	03-04	04-05	05-06	06-07	07-08	08-09	09-10	10-11	11-12	12-13
K	369	398	373	366	386	434	419	444	418	457
1	404	370	409	376	394	400	422	441	461	434
2	368	412	370	414	389	414	400	441	440	481
3	383	380	425	391	438	403	402	415	435	446
4	364	403	386	441	407	441	392	430	411	467
5	412	377	400	393	464	429	438	424	440	405
6	422	426	397	411	416	471	426	467	423	464
7	446	424	435	394	426	429	469	438	476	437
8	417	451	423	429	397	437	429	460	427	466
9	495	472	496	493	511	450	477	504	500	470
10	462	476	469	468	480	489	427	458	494	507
11	462	471	478	481	467	483	483	431	457	487
12	400	468	454	480	471	480	498	497	478	472
<b>TOTAL</b>	<b>5,404</b>	<b>5,528</b>	<b>5,515</b>	<b>5,537</b>	<b>5,646</b>	<b>5,760</b>	<b>5,682</b>	<b>5,850</b>	<b>5,860</b>	<b>5,993</b>
K-12	5,404	5,528	5,515	5,537	5,646	5,760	5,682	5,850	5,860	5,993
K-5	2,300	2,340	2,363	2,381	2,478	2,521	2,473	2,595	2,605	2,690
6-8	1,285	1,301	1,255	1,234	1,239	1,337	1,324	1,365	1,326	1,367
9-12	1,819	1,887	1,897	1,922	1,929	1,902	1,885	1,890	1,929	1,936

**TABLE 2**  
**Student Enrollment Changes**  
**Middleton-Cross Plains Area School District**

GRADE	ABSOLUTE CHANGE			PERCENT CHANGE			AVERAGE ANNUAL PERCENT CHANGE		
	03 to 12	03 to 07	08 to 12	03 to 12	03 to 07	08 to 12	03 to 12	03 to 07	08 to 12
K	88	17	23	23.8	4.6	5.3	2.6	1.2	1.3
1	30	-10	34	7.4	-2.5	8.5	0.8	-0.6	2.1
2	113	21	67	30.7	5.7	16.2	3.4	1.4	4.0
3	63	55	43	16.4	14.4	10.7	1.8	3.6	2.7
4	103	43	26	28.3	11.8	5.9	3.1	3.0	1.5
5	-7	52	-24	-1.7	12.6	-5.6	-0.2	3.2	-1.4
6	42	-6	-7	10.0	-1.4	-1.5	1.1	-0.4	-0.4
7	-9	-20	8	-2.0	-4.5	1.9	-0.2	-1.1	0.5
8	49	-20	29	11.8	-4.8	6.6	1.3	-1.2	1.7
9	-25	16	20	-5.1	3.2	4.4	-0.6	0.8	1.1
10	45	18	18	9.7	3.9	3.7	1.1	1.0	0.9
11	25	5	4	5.4	1.1	0.8	0.6	0.3	0.2
12	72	71	-8	18.0	17.8	-1.7	2.0	4.4	-0.4
<b>TOTAL</b>	<b>589</b>	<b>242</b>	<b>233</b>	<b>10.9</b>	<b>4.5</b>	<b>4.0</b>	<b>1.2</b>	<b>1.1</b>	<b>1.0</b>
K-12	589	242	233	10.9	4.5	4.0	1.2	1.1	1.0
K-5	390	178	169	17.0	7.7	6.7	1.9	1.9	1.7
6-8	82	-46	30	6.4	-3.6	2.2	0.7	-0.9	0.6
9-12	117	110	34	6.4	6.0	1.8	0.7	1.5	0.4



District enrollment has grown overall since 2003, from 5,404 students in the 2003-04 school year to 5,993 students in 2012-13. This is a growth of 589 students, or a 10.9% increase in enrollment. Figure 1-B shows enrollment history broken down by grade groupings (K-5, 6-8, and 9-12). The elementary school enrollment grew in the last five years by 1.7% annually and grew 1.9% annually the first five years. In the middle school grades, enrollment grew over the last five years by 0.6% annually, but in the previous five years enrollment decreased by -0.9% annually. At the high school level, the last five years' enrollment increased by 0.4% and the first five years' enrollment increased by 1.5% annually.

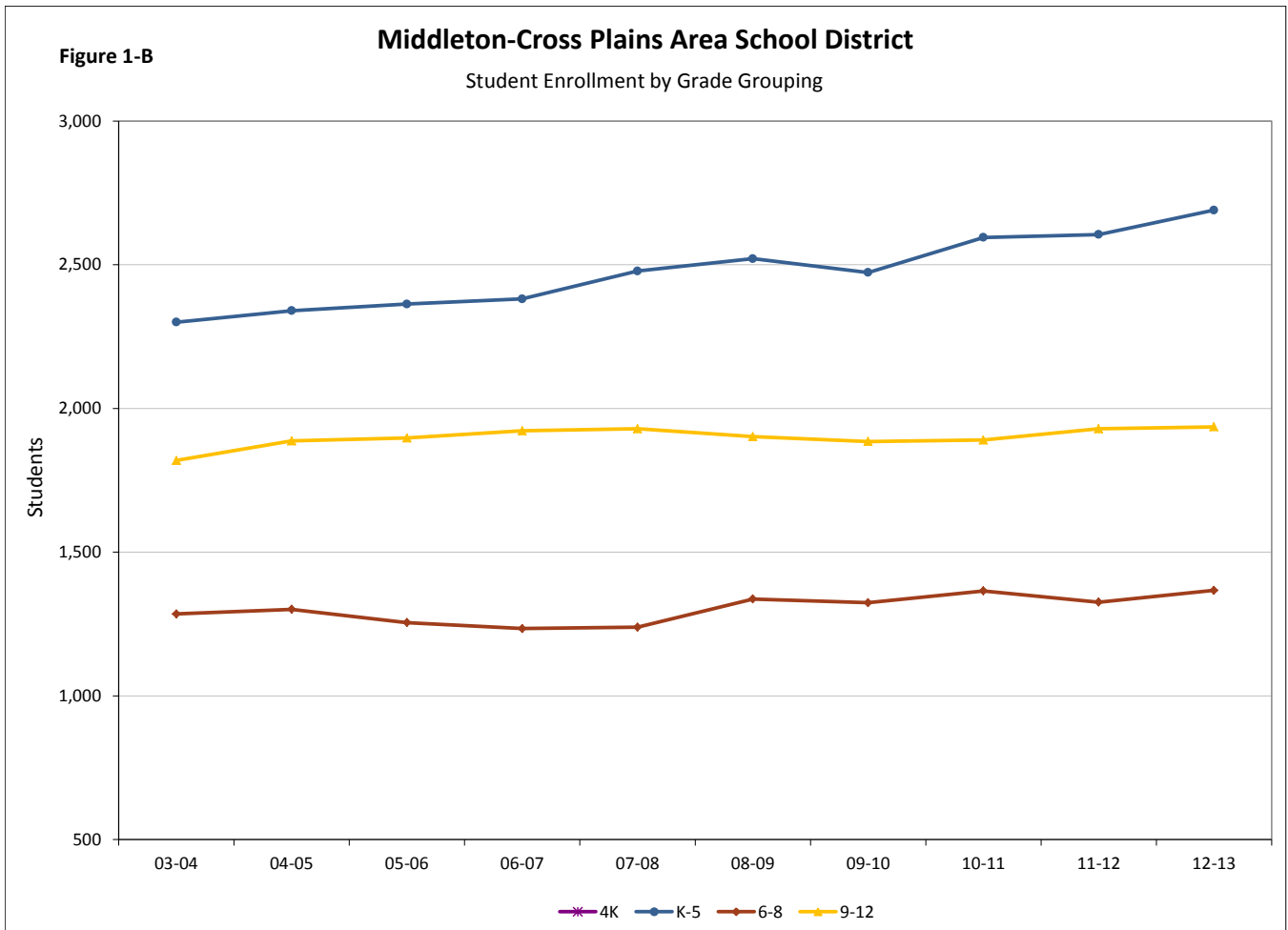
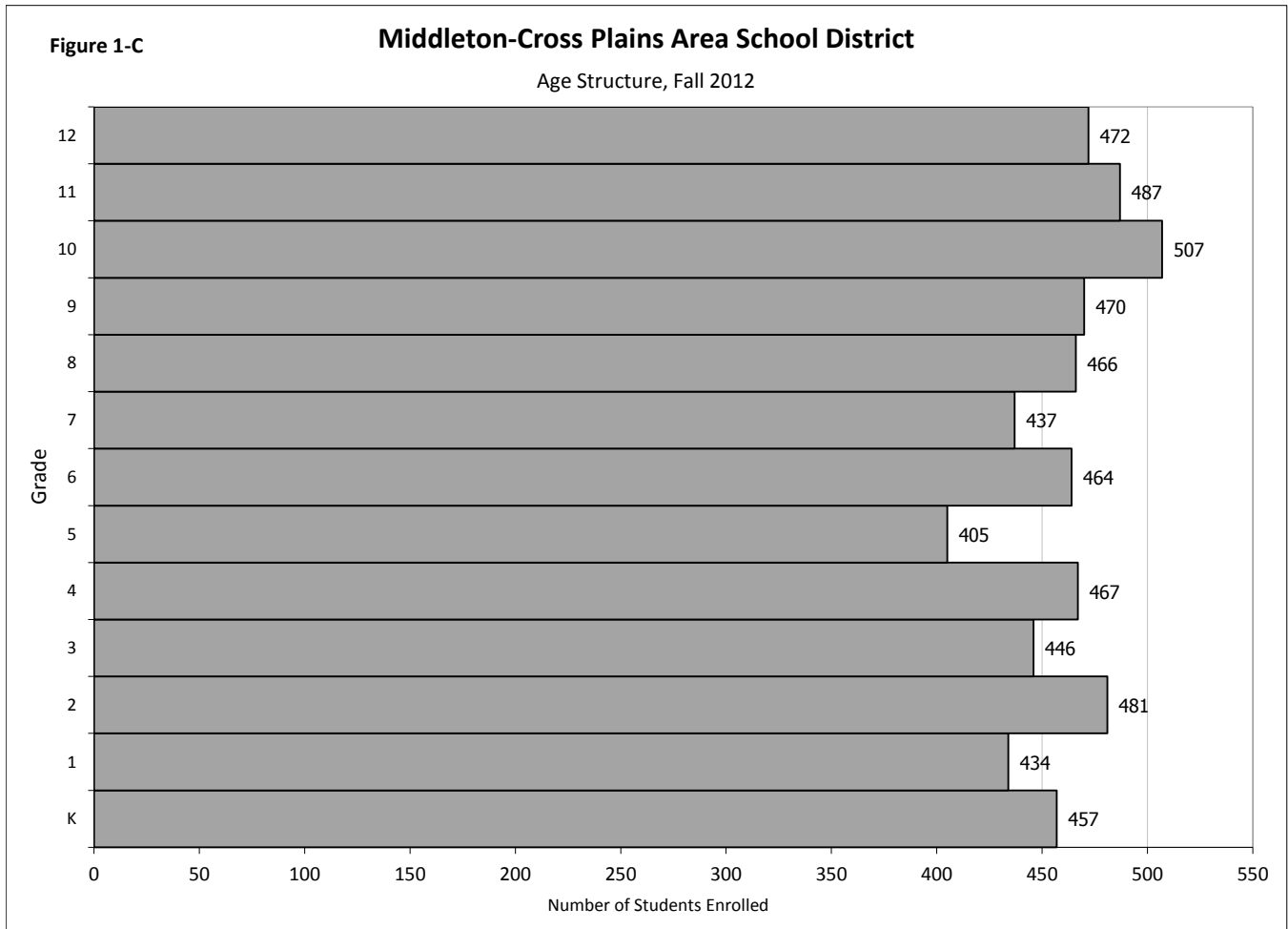


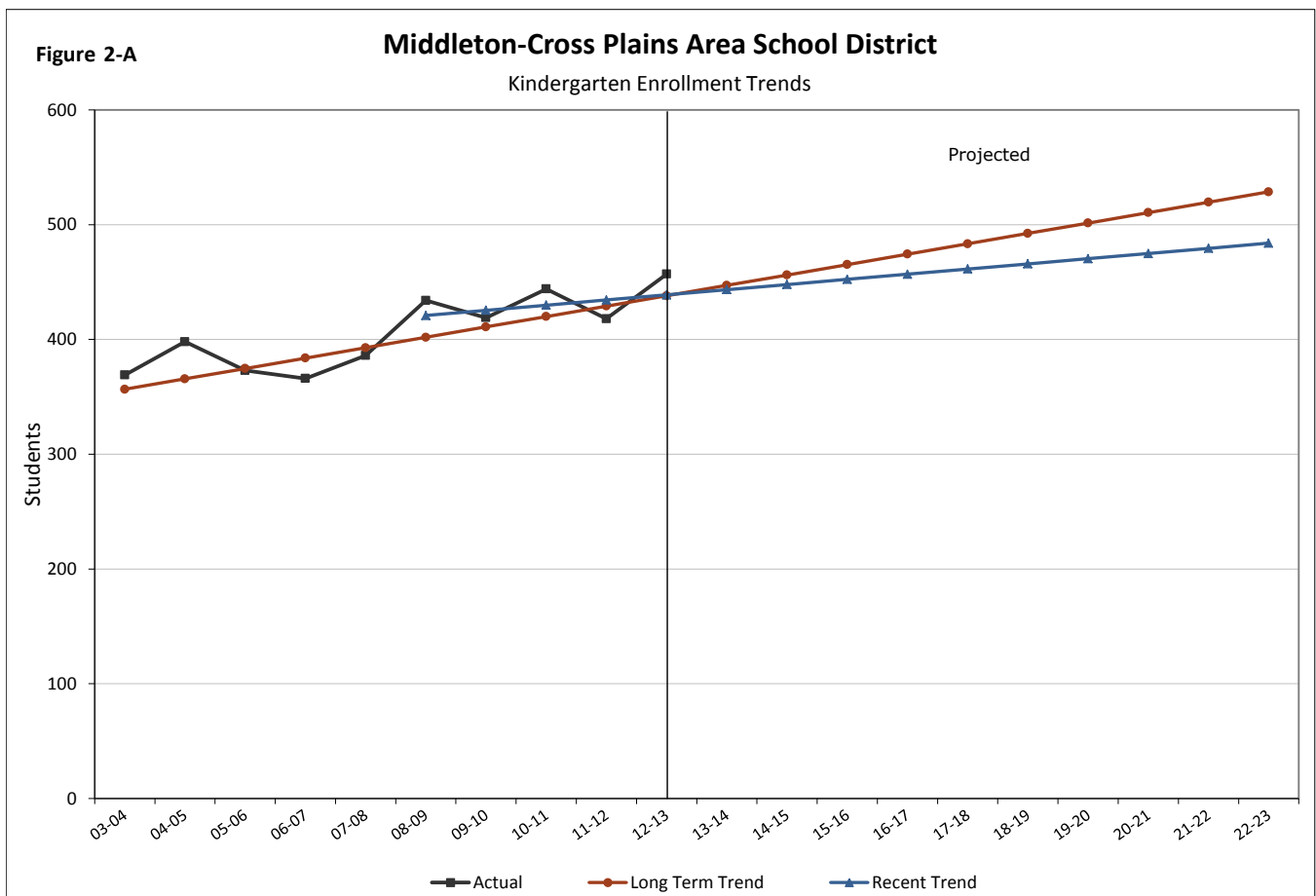
Figure 1-C shows the age structure in the fall of 2012 of the student population with the number of kindergarteners at the bottom and the number of 12<sup>th</sup> graders at the top. The greatest number of students are in 10<sup>th</sup> and 11<sup>th</sup> grades, while 1<sup>st</sup> and 5<sup>th</sup> grades contain the fewest number of students.



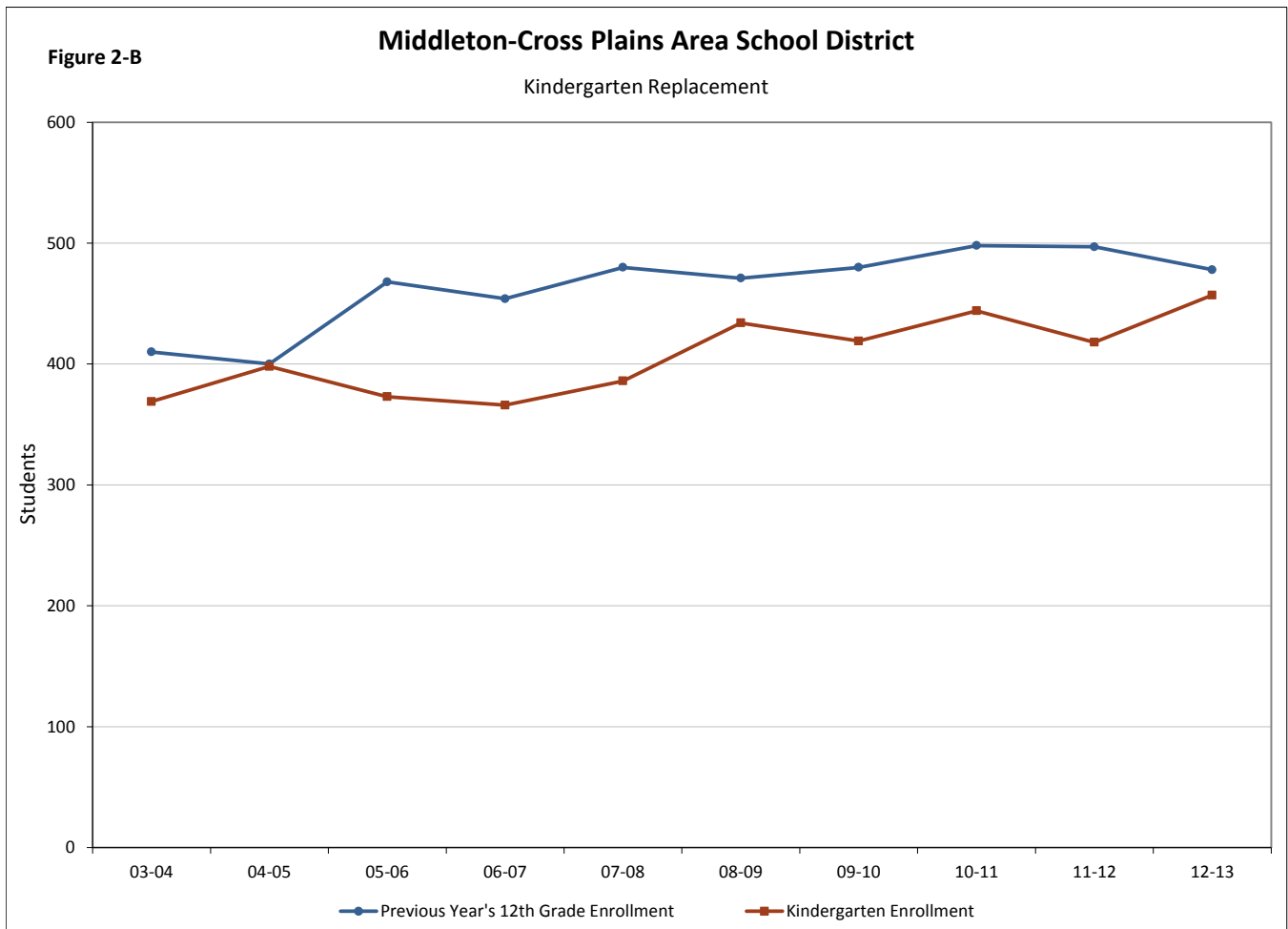


## Kindergarten Enrollment Trends

Examining trends in kindergarten enrollment is particularly informative for gaining perspective on future district enrollment, as today's kindergartners will gradually make up tomorrow's students at the higher grade levels as they age and move through the school system. When kindergarten enrollment is increasing, elementary and middle school enrollment might be expected to increase in the near future, while high school enrollment may increase further in the future. Figure 2-A shows kindergarten enrollment history in black, and trend lines depicting kindergarten enrollment in red and blue. The "Long Term Trend" line averages kindergarten enrollment changes between 2003 and 2012. The "Recent Trend" line emphasizes kindergarten enrollment changes over the last five years. In the Middleton-Cross Plains Area School District, the long term and recent trends indicate increasing kindergarten enrollment.



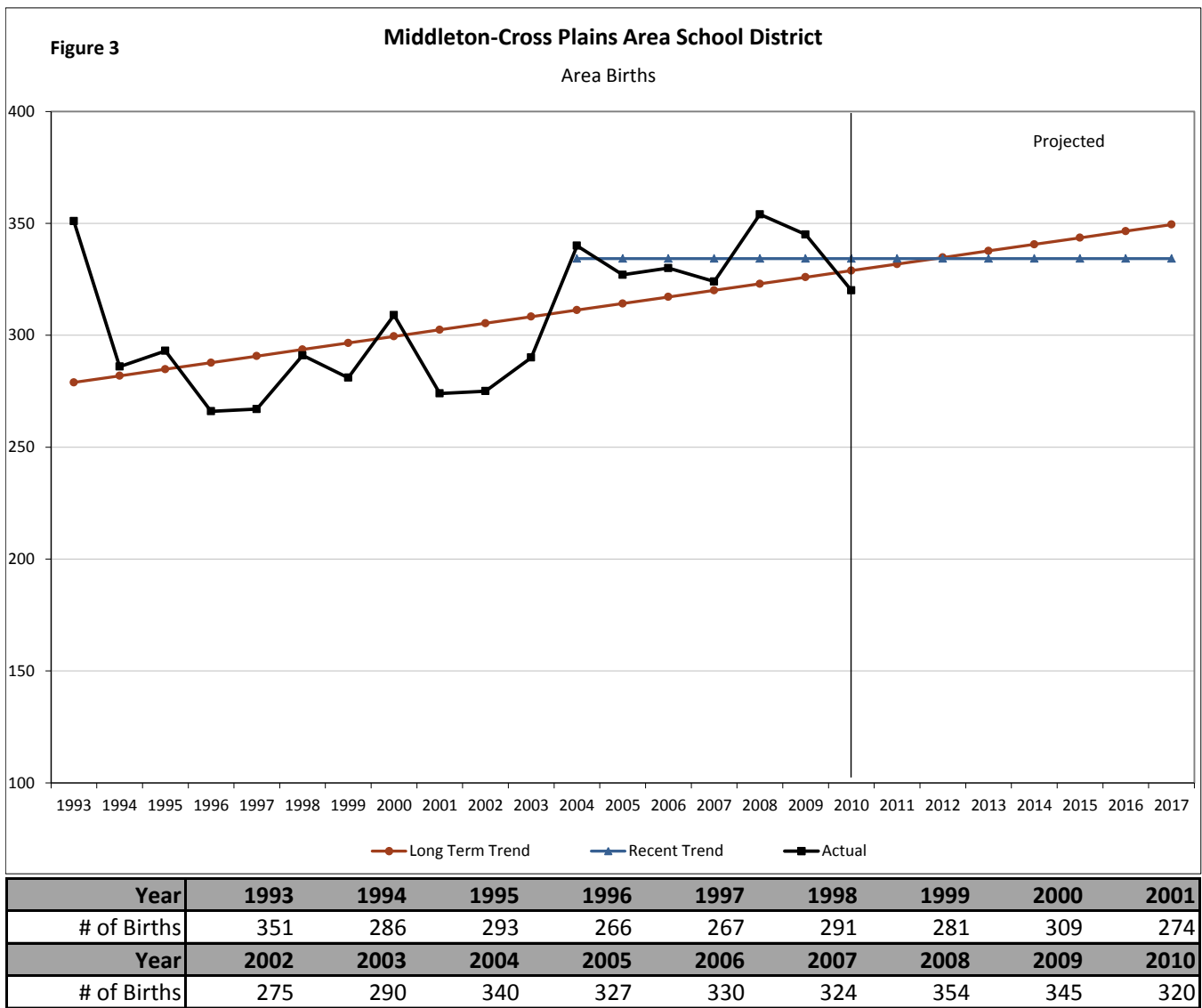
In addition to examining kindergarten enrollment on its own, comparing kindergarten enrollment to outgoing 12<sup>th</sup> graders offers a snapshot of how the age structure of district enrollment is shifting either from older to younger, or younger to older. A district may experience overall growth when kindergarten enrollment outpaces outgoing 12<sup>th</sup> grade students, and they tend to experience decline when kindergartners do not fully replace the number of graduates. Although private schools may also influence the number of kindergartners as some students will attend a private school through 8<sup>th</sup> grade but move to public school for high school. Over the last ten years, there were fewer incoming kindergartners than outgoing 12<sup>th</sup> graders from the previous year except in 2004-05.



## Birth Trends and Projections

We use historical and projected birth data to forecast the number of kindergarten students who will enroll in the school district in future years. Figure 3 shows (in black) the number of births to mothers living in municipalities that fall within school district boundaries, by year, from 1993-2010, as collected from the Wisconsin Department of Health Services. We count resident births from the City of Middleton, the Village of Cross Plains, and the Towns of Berry, Cross Plains, Middleton, and Springfield.

We extrapolate these birth trends into the future to correspond with our Baseline and Recent Trend projection models, using the grade progression ratios to convert births into future kindergarteners. The red line represents birth trends over the long term and the blue line examines birth patterns for the last seven years. Long term birth trends are increasing while the recent birth trends indicate steady births over time.



Source: WI Department of Health Services



## Population Estimates and Projections

This section examines population trends for municipalities that fall within the Middleton-Cross Plains Area School District. Changes in the total population of the district area, particularly when examined by age, provide clues into how the school age population may be changing.

Table 3 and Figure 4-A provide U. S. Census population counts and Wisconsin Department of Administration (DOA) estimates for district area municipalities from 1990 to 2012. These population totals can be compared with populations for Dane County and State of Wisconsin. The district area grew quickly from 1990 to 2000, and general population growth has continued to grow from 2000 to 2010 but has slowed. The municipalities in the district area experienced, on average, 1.4% annual growth from 2000 to 2010 according to the U.S. Census.

**TABLE 3**  
**Total Population by Municipality: 1990-2012**  
**Middleton-Cross Plains Area School District**

Municipality	POPULATION						
	Census 1990	est. 1995	Census 2000	est. 2005	Census 2010	est. 2011	est. 2012
<b>C. Middleton</b>	13,785	14,818	15,770	16,760	17,442	17,555	17,903
<b>T. Middleton</b>	3,628	3,968	4,594	5,350	5,877	5,921	5,950
<b>V. Cross Plains</b>	2,362	2,831	3,084	3,452	3,538	3,543	3,547
<b>T. Cross Plains</b>	1,206	1,329	1,419	1,477	1,507	1,510	1,511
<b>T. Berry</b>	1,098	1,146	1,084	1,150	1,127	1,131	1,135
<b>T. Springfield</b>	2,650	2,782	2,762	2,819	2,734	2,739	2,749
<b>District Area</b>	<b>24,729</b>	<b>26,874</b>	<b>28,713</b>	<b>31,008</b>	<b>32,225</b>	<b>32,399</b>	<b>32,795</b>
<b>Dane County</b>	367,085	393,857	426,526	458,297	488,073	489,331	491,555
<b>State of Wisconsin</b>	4,891,769	5,101,581	5,363,715	5,580,757	5,686,986	5,694,236	5,703,500

Municipality	PERCENT CHANGE						AVG. ANNUAL 2000-2010
	1990 to 1995	1995 to 2000	2000 to 2005	2005 to 2010	2010 to 2011	2011 to 2012	
<b>C. Middleton</b>	7.5%	6.4%	6.3%	4.1%	0.6%	2.0%	1.2%
<b>T. Middleton</b>	9.4%	15.8%	16.5%	9.9%	0.7%	0.5%	3.1%
<b>V. Cross Plains</b>	19.9%	8.9%	11.9%	2.5%	0.1%	0.1%	1.6%
<b>T. Cross Plains</b>	10.2%	6.8%	4.1%	2.0%	0.2%	0.1%	0.7%
<b>T. Berry</b>	4.4%	-5.4%	6.1%	-2.0%	0.4%	0.4%	0.4%
<b>T. Springfield</b>	5.0%	-0.7%	2.1%	-3.0%	0.2%	0.4%	-0.1%
<b>District Area</b>	<b>8.7%</b>	<b>6.8%</b>	<b>8.0%</b>	<b>3.9%</b>	<b>0.5%</b>	<b>1.2%</b>	<b>1.4%</b>
<b>Dane County</b>	7.3%	8.3%	7.4%	6.5%	0.3%	0.5%	1.6%
<b>State of Wisconsin</b>	4.3%	5.1%	4.0%	1.9%	0.1%	0.2%	0.7%

Source: U. S. Census Bureau & Demographic Services Center, WIDOA



Figure 4-A

### Middleton-Cross Plains Area School District

Population for Area Municipalities

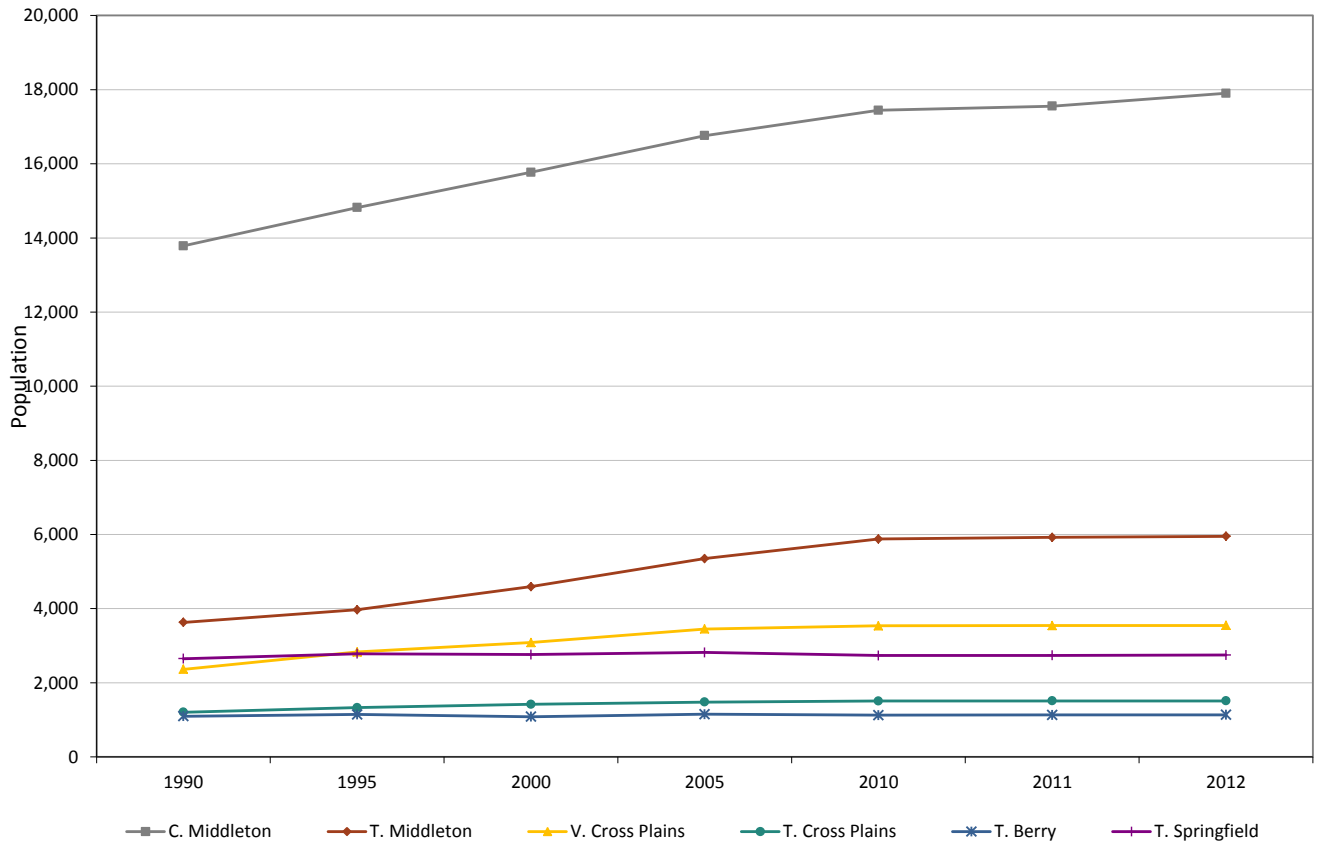
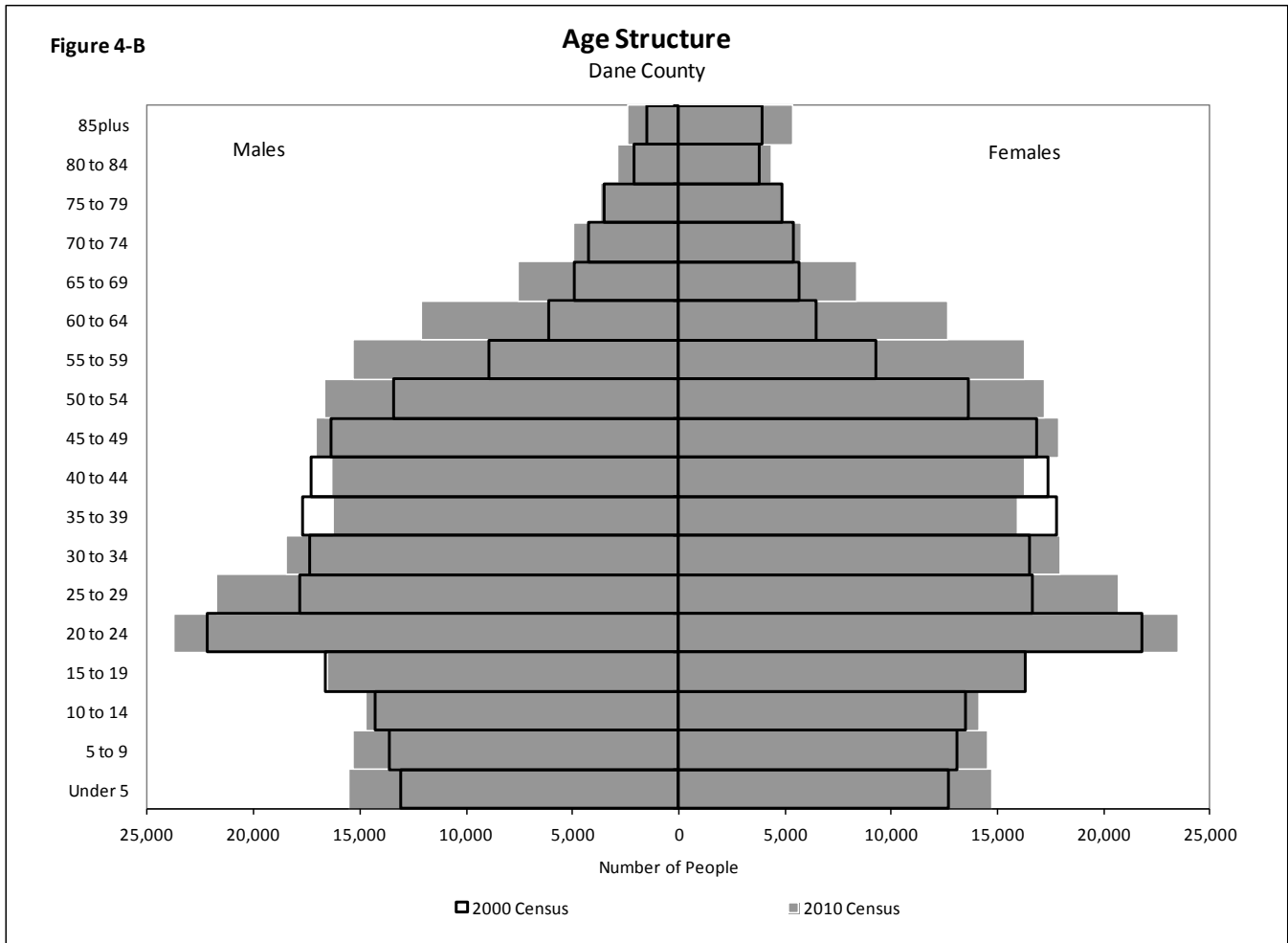


Figure 4-B compares the 2000 population to the 2010 population by age for Dane County from the U.S. Census Bureau. All school age populations (Under 5, 5-9, and 10-14) have increased over this ten year period in Dane County.



Race/ethnicity population totals by municipality and for the district area as a whole are provided in Table 4 from the most recent 2010 Census. The overall population by race/ethnicity can be compared to Dane County and the State of Wisconsin.

**TABLE 4**  
**Race/Ethnicity Population by Municipality: 2010**  
**MCPASD**

Municipality	Total	White	African American	Hispanic	Asian	American Indian
<b>C. Middleton</b>	17,442	14,694	755	984	848	77
<b>T. Middleton</b>	5,877	5,517	47	98	189	16
<b>V. Cross Plains</b>	3,538	3,398	38	57	32	9
<b>T. Cross Plains</b>	1,507	1,464	2	26	8	4
<b>T. Berry</b>	1,127	1,106	3	12	4	2
<b>T. Springfield</b>	2,734	2,575	16	92	38	9
<b>District Area</b>	<b>32,225</b>	<b>28,754</b>	<b>861</b>	<b>1,269</b>	<b>1,119</b>	<b>117</b>
<b>Dane County</b>	488,073	399,488	29,007	28,925	25,633	2,525
<b>State of Wisconsin</b>	5,686,986	4,738,411	380,660	336,056	143,931	68,593

**Percent of Total Population**

Municipality	White	African American	Hispanic	Asian	American Indian
<b>C. Middleton</b>	84.24%	4.33%	5.64%	4.86%	0.44%
<b>T. Middleton</b>	93.87%	0.80%	1.67%	3.22%	0.27%
<b>V. Cross Plains</b>	96.04%	1.07%	1.61%	0.90%	0.25%
<b>T. Cross Plains</b>	97.15%	0.13%	1.73%	0.53%	0.27%
<b>T. Berry</b>	98.14%	0.27%	1.06%	0.35%	0.18%
<b>T. Springfield</b>	94.18%	0.59%	3.37%	1.39%	0.33%
<b>District Area</b>	<b>89.23%</b>	<b>2.67%</b>	<b>3.94%</b>	<b>3.47%</b>	<b>0.36%</b>
<b>Dane County</b>	81.85%	5.94%	5.93%	5.25%	0.52%
<b>State of Wisconsin</b>	83.32%	6.69%	5.91%	2.53%	1.21%

Source: U. S. Census Bureau



## Residential Development

Table 5 shows the number of housing starts in the Middleton-Cross Plains Area School District area. Area housing starts have fluctuated from a high of 390 units in 2002 (including 266 single family homes), to a low of 66 new housing starts (including 62 single family homes) in 2007. However, the last four years the district area has seen an increase in housing starts, especially single family homes.

**TABLE 5**  
**School District Area Housing Starts**  
**Middleton-Cross Plains Area School District**

	2002	2003	2004	2005	2006	2007	2008	2009	2010	2011
<b>District Area</b>										
<b>TOTAL</b>	<b>390</b>	<b>326</b>	<b>359</b>	<b>201</b>	<b>112</b>	<b>66</b>	<b>119</b>	<b>129</b>	<b>106</b>	<b>282</b>
Single Family	266	254	238	161	86	62	76	67	80	83
Two Family	13	10	1	10	10	4	4	2	2	0
Multi-family	111	62	120	30	16	0	39	60	24	199
<b>C. Middleton</b>										
<b>TOTAL</b>	<b>207</b>	<b>113</b>	<b>209</b>	<b>84</b>	<b>52</b>	<b>29</b>	<b>70</b>	<b>97</b>	<b>69</b>	<b>248</b>
Single Family	84	53	88	48	28	27	27	38	43	49
Two Family	12	6	1	6	8	2	4	2	2	0
Multi-family	111	54	120	30	16	0	39	57	24	199
<b>T. Middleton</b>										
<b>TOTAL</b>	<b>105</b>	<b>117</b>	<b>68</b>	<b>65</b>	<b>30</b>	<b>18</b>	<b>27</b>	<b>12</b>	<b>24</b>	<b>17</b>
Single Family	105	117	68	65	30	18	27	12	24	17
Two Family	0	0	0	0	0	0	0	0	0	0
Multi-family	0	0	0	0	0	0	0	0	0	0
<b>V. Cross Plains</b>										
<b>TOTAL</b>	<b>51</b>	<b>56</b>	<b>49</b>	<b>25</b>	<b>9</b>	<b>6</b>	<b>4</b>	<b>5</b>	<b>3</b>	<b>3</b>
Single Family	50	44	49	21	7	4	4	5	3	3
Two Family	1	4	0	4	2	2	0	0	0	0
Multi-family	0	8	0	0	0	0	0	0	0	0
<b>T. Cross Plains</b>										
<b>TOTAL</b>	<b>6</b>	<b>18</b>	<b>9</b>	<b>1</b>	<b>5</b>	<b>5</b>	<b>7</b>	<b>3</b>	<b>2</b>	<b>3</b>
Single Family	6	18	9	1	5	5	7	3	2	3
Two Family	0	0	0	0	0	0	0	0	0	0
Multi-family	0	0	0	0	0	0	0	0	0	0
<b>T. Berry</b>										
<b>TOTAL</b>	<b>10</b>	<b>9</b>	<b>11</b>	<b>9</b>	<b>4</b>	<b>3</b>	<b>4</b>	<b>3</b>	<b>4</b>	<b>2</b>
Single Family	10	9	11	9	4	3	4	3	4	2
Two Family	0	0	0	0	0	0	0	0	0	0
Multi-family	0	0	0	0	0	0	0	0	0	0
<b>T. Springfield</b>										
<b>TOTAL</b>	<b>11</b>	<b>13</b>	<b>13</b>	<b>17</b>	<b>12</b>	<b>5</b>	<b>7</b>	<b>9</b>	<b>4</b>	<b>9</b>
Single Family	11	13	13	17	12	5	7	6	4	9
Two Family	0	0	0	0	0	0	0	0	0	0
Multi-family	0	0	0	0	0	0	0	3	0	0

Source: Demographic Services Center, WIDOA





Examining trends in recent housing development can help to explain how in-migration into the Middleton-Cross Plains Area School District area might be affecting school enrollment. If the number of housing starts in the district area is expected to be reasonably consistent for the next several years, then we assume that in-migration of school-age children will also remain relatively consistent. If the number of housing starts is expected to decrease significantly outside recent levels, in-migration may slow in the school district. It is important to recognize that the number of housing starts in any given year is dependent upon a large number of confounding variables (decisions of local, county, and state policy makers, residential developers, interest rates, demand for housing, etc.), making future growth patterns difficult to predict.

The majority of housing development in the early 2000s occurred in the City of Middleton and the Town of Middleton. However, the city and town has still seen continued construction of single family housing. The other towns in the district have seen very minimal housing development. Most of the development in the area has consisted of single-family homes; however the district area has seen some spikes in multi-family residential development in 2002, 2004, and 2011. Households in two family and multi-family complexes, on average, contain fewer school-aged children than single family homes.

It is also important to consider that turnover in ownership of existing housing stock also contributes to changes in enrollment. A district may increase or decrease in enrollment depending upon the cycle of resident homeowners, regardless of housing starts. For instance, a younger community will have a higher child-per-household ratio, whereas an older community will have a lower child-per-household ratio. Within a few years a turnover in ownership in an older community may result in an increase in the child-per-household number. As younger families move into the area, the school district will tend to see new students enrolling into the district's schools. Absent new housing development or housing turnover, families age in place and the number of school-aged children eventually declines. Turnover in ownership does not happen overnight, however, and slow turnover may happen for several years at varying rates.

Figure 5-A shows the number of residential building permits issued by municipality for communities that fall within the Middleton-Cross Plains Area School District. Figure 5-B shows housing starts in the area by type of housing unit.



Figure 5-A

Middleton-Cross Plains Area School District

Area Housing Starts by Municipality

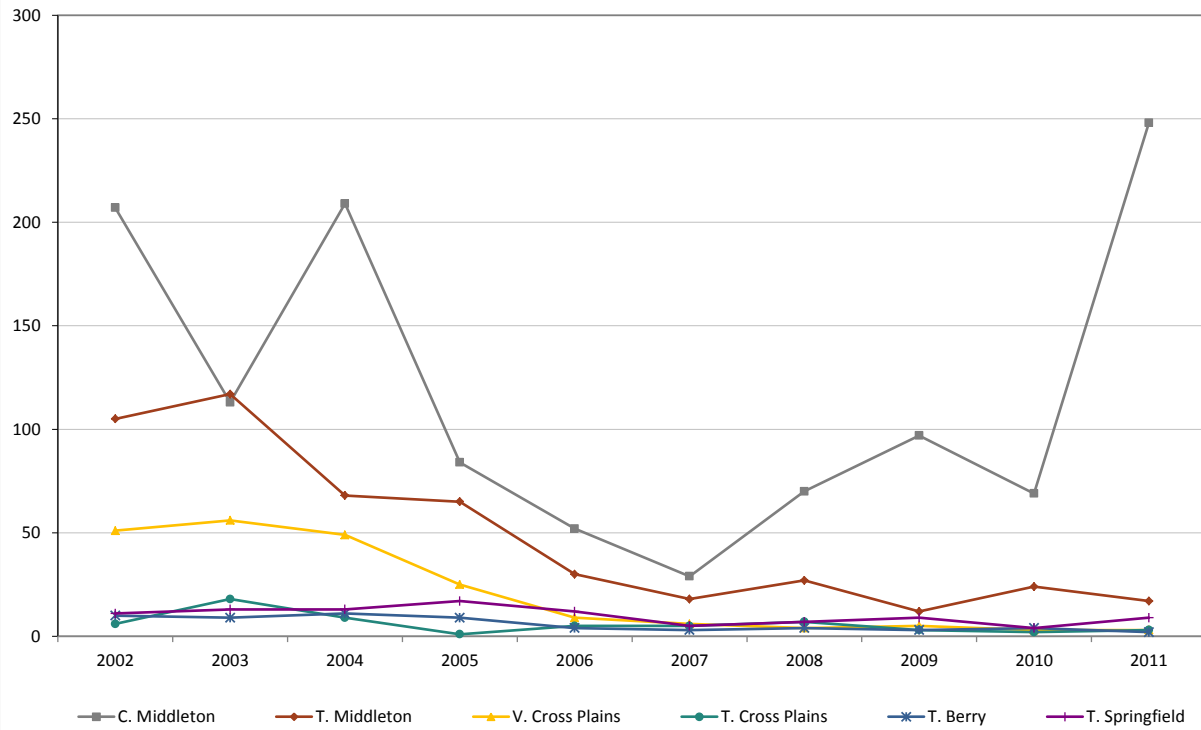
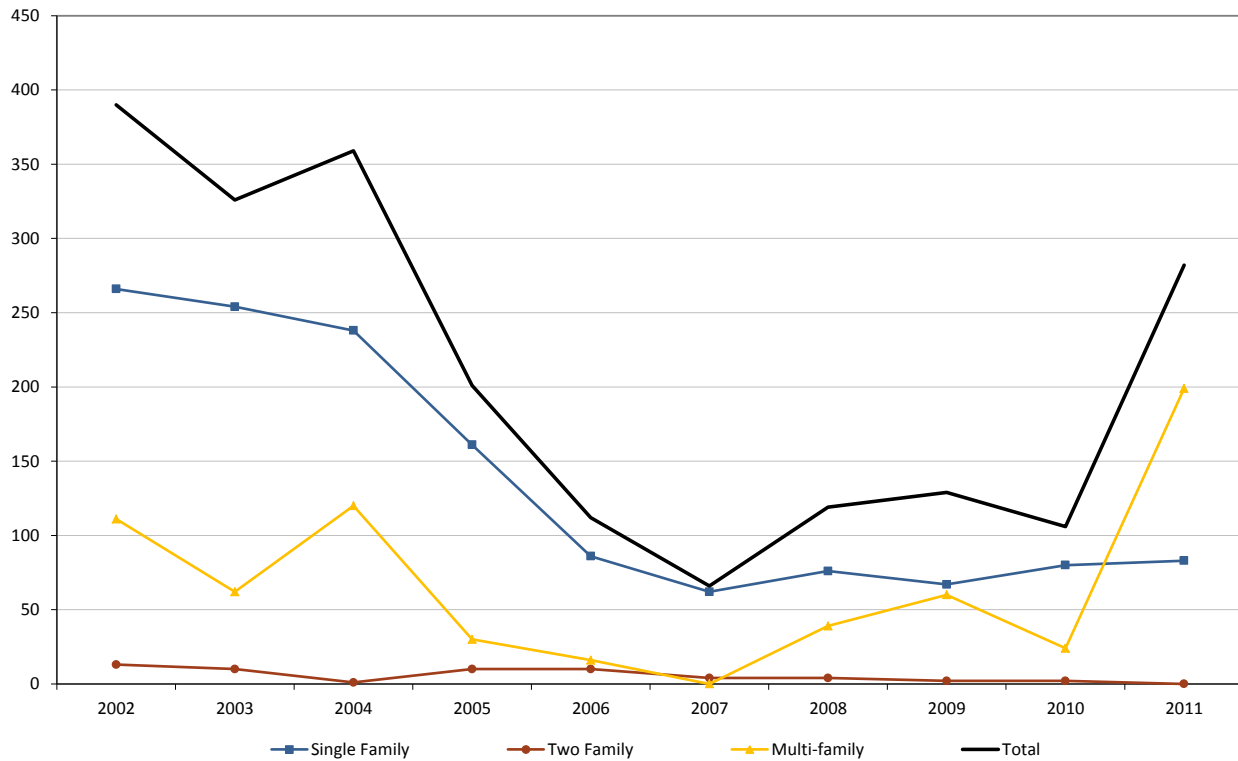


Figure 5-B

Middleton-Cross Plains Area School District

Area Housing Starts by Type



## Method

In order to generate school enrollment projections, we rely on a commonly used demographic technique called the “cohort survival” method or the “grade progression ratio” method. This method advances current students through the school system over time and applies rates of transfer (or “survival”) as the students who are now in school age from year to year and grade to grade. It is through these rates of transfer that we make assumptions about how migration into and out of the district and transfers to and from different schools will impact future enrollment. Four different models are provided using different assumptions regarding past enrollment trends and birth trends.

### Grade Progression Ratios

Grade progression ratios are used to measure district enrollment changes, year to year and grade to grade, that have occurred within the school district in the recent past. By examining these, we can better understand recent changes in enrollment. We use these ratios as the rates of transfer to inform future student projections.

Table 6 shows the grade progression ratios for the Middleton-Cross Plains Area School District. The ratios measure the effects of in- and out-migration and the transfer of students between private and public schools. The ratios are calculated for several pairs of years and then averages of these based on different time frames are calculated for each grade.

**TABLE 6**  
Grade Progression Ratios  
Middleton-Cross Plains Area School District

YEAR CHANGES	B:K	K:1	1:2	2:3	3:4	4:5	5:6	6:7	7:8	8:9	9:10	10:11	11:12
03-04/04-05	1.407	1.003	1.020	1.033	1.052	1.036	1.034	1.005	1.011	1.132	0.962	1.019	1.013
04-05/05-06	1.312	1.028	1.000	1.032	1.016	0.993	1.053	1.021	0.998	1.100	0.994	1.004	0.964
05-06/06-07	1.221	1.008	1.012	1.057	1.038	1.018	1.028	0.992	0.986	1.165	0.944	1.026	1.004
06-07/07-08	1.351	1.077	1.035	1.058	1.041	1.052	1.059	1.036	1.008	1.191	0.974	0.998	0.979
07-08/08-09	1.580	1.036	1.051	1.036	1.007	1.054	1.015	1.031	1.026	1.134	0.957	1.006	1.028
08-09/09-10	1.470	0.972	1.000	0.971	0.973	0.993	0.993	0.996	1.000	1.092	0.949	0.988	1.031
09-10/10-11	1.373	1.053	1.045	1.038	1.070	1.082	1.066	1.028	0.981	1.175	0.960	1.009	1.029
10-11/11-12	1.262	1.038	0.998	0.986	0.990	1.023	0.998	1.019	0.975	1.087	0.980	0.998	1.109
11-12/12-13	1.389	1.038	1.043	1.014	1.074	0.985	1.055	1.033	0.979	1.101	1.014	0.986	1.033
<b>Baseline</b>	<b>1.384</b>	<b>1.029</b>	<b>1.019</b>	<b>1.035</b>	<b>1.024</b>	<b>1.024</b>	<b>1.040</b>	<b>1.025</b>	<b>0.992</b>	<b>1.120</b>	<b>0.968</b>	<b>1.006</b>	<b>1.017</b>
<b>5 Year Trend</b>	<b>1.415</b>	<b>1.028</b>	<b>1.027</b>	<b>1.009</b>	<b>1.023</b>	<b>1.028</b>	<b>1.025</b>	<b>1.022</b>	<b>0.992</b>	<b>1.118</b>	<b>0.972</b>	<b>0.997</b>	<b>1.046</b>
<b>2 Year "Trend"</b>	<b>1.325</b>	<b>1.038</b>	<b>1.021</b>	<b>1.000</b>	<b>1.032</b>	<b>1.004</b>	<b>1.026</b>	<b>1.026</b>	<b>0.977</b>	<b>1.094</b>	<b>0.997</b>	<b>0.992</b>	<b>1.071</b>

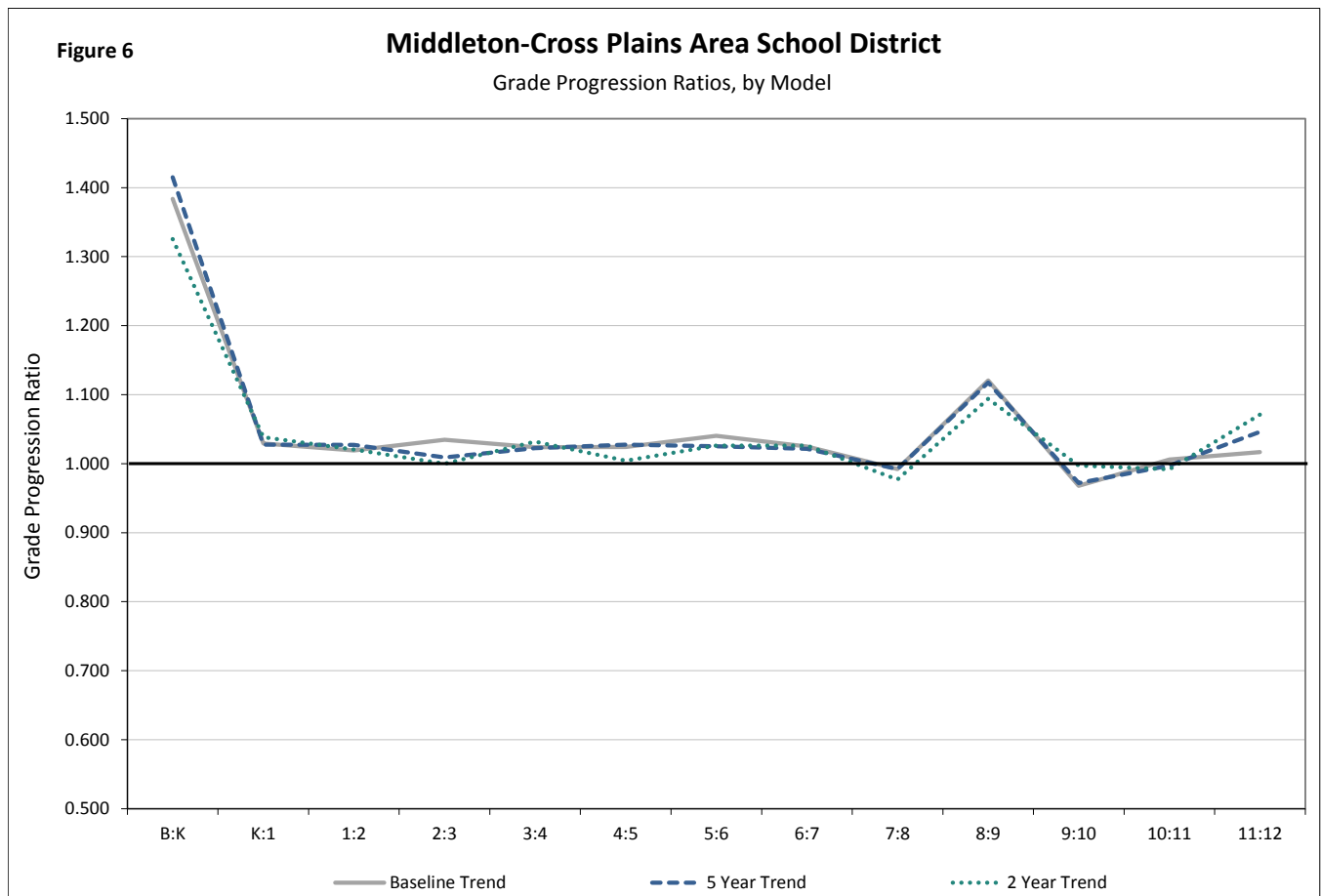
\*Shaded progression ratios are excluded from the Baseline Average

The grade progression ratios can be interpreted in the following manner. The Baseline ratio for 1:2 is 1.019. This means that in the Middleton-Cross Plains Area School District, the second grade class is



on average 1.9% larger each year than the first grade class was the previous year (the result of transfers from other schools and in-migration into the district). The B:K Baseline ratio of 1.384 indicates that on average, an additional 38% of kindergartners are from births outside the district in Middleton-Cross Plains Area School District. Outliers (ratios outside of one standard deviation of the mean) are not included in the calculation of the Baseline average ratios.

In order to examine future enrollment under different growth assumptions, we generate three sets of grade progression ratios that correspond to the different projection models shown later in this report. In addition to the Baseline ratios (averages 10 years of enrollment), we examine rates of transfer in the last 5 years and last 2 years effectively weighing enrollment change patterns from different time periods more heavily than the Baseline. Any significant deviations from the rates of in- and out-migration in the district area will have a corresponding effect on enrollment. These additional models allow us to examine alternative outcomes compared to the overall trends of the Baseline model. Figure 6 shows the differences between these three sets of grade progression ratios.



## School Enrollment Projections

When considering all of the projections provided in this report for decision-making, it is important to recognize that population projections of all types, including school enrollment projections, are more accurate in the immediate future than they are further into the future. This is especially true for elementary grades, because the students who will enter kindergarten after 2016 have not yet been born. Overall, our projections are more reliable over the next five years (up to the 2017-18 school year) than they are in the latter half of the next decade.

### Baseline Projection

The Baseline model (Table 7) projects enrollments using the assumption that average trends year to year, grade to grade, will continue into the future. This model assumes that long term trends (past ten years) in enrollment and migration will be representative of future trends in the district. Enrollment is projected to increase from 5,993 students in 2012-13 to 6,554 students in 2017-18. Over the next five years (2017-18), the Baseline model projects that K-12 enrollment will increase by 9.4%.

**TABLE 7**  
**Baseline Projection Model**  
**Middleton-Cross Plains Area School District**

	SCHOOL YEAR									
	13-14	14-15	15-16	16-17	17-18	18-19	19-20	20-21	21-22	22-23
K	476	482	454	454	462	466	470	474	478	482
1	470	490	496	468	467	475	479	484	488	492
2	442	479	499	505	477	476	484	489	493	497
3	498	458	496	516	523	493	492	501	506	510
4	457	510	469	508	529	535	505	504	513	518
5	478	468	522	480	520	542	548	517	516	526
6	421	498	487	543	499	541	563	570	538	537
7	476	432	510	499	557	512	555	578	584	551
8	434	472	428	506	495	552	508	550	573	580
9	522	486	529	480	567	554	619	569	616	642
10	455	505	470	512	465	549	537	599	551	597
11	510	458	508	473	515	467	552	540	602	554
12	495	518	465	517	481	523	475	561	549	612
<b>TOTAL</b>	<b>6,134</b>	<b>6,254</b>	<b>6,333</b>	<b>6,460</b>	<b>6,554</b>	<b>6,685</b>	<b>6,787</b>	<b>6,935</b>	<b>7,007</b>	<b>7,098</b>
K-12	6,134	6,254	6,333	6,460	6,554	6,685	6,787	6,935	7,007	7,098
K-5	2,821	2,886	2,935	2,930	2,977	2,987	2,979	2,968	2,994	3,024
6-8	1,331	1,401	1,425	1,548	1,551	1,605	1,626	1,698	1,695	1,668
9-12	1,982	1,967	1,972	1,982	2,027	2,094	2,183	2,269	2,318	2,405



## 5 Year Trend Projection

The 5 Year Trend model (Table 8) uses the grade progression ratios from the last five years and recent birth trends to project what future enrollments would look like if more recent patterns were representative of future trends. For the 5 Year Trend, enrollment is projected to increase from 5,993 students in 2012-13 to 6,529 students in 2017-18. With recent migration rates weighted more heavily, enrollment in the Middleton-Cross Plains Area School District is projected to increase by 9% over the next five years.

**TABLE 8**  
**5 Year Trend Projection Model**  
**Middleton-Cross Plains Area School District**

GRADE	SCHOOL YEAR									
	13-14	14-15	15-16	16-17	17-18	18-19	19-20	20-21	21-22	22-23
K	487	492	465	466	473	473	473	473	473	473
1	470	500	506	477	479	486	486	486	486	486
2	446	482	514	520	490	492	499	499	499	499
3	485	450	487	518	524	495	497	504	504	504
4	456	496	460	498	530	536	506	508	515	515
5	480	469	510	473	511	545	551	520	522	529
6	415	492	480	523	485	524	558	565	533	535
7	474	424	503	491	534	495	536	570	577	545
8	434	470	421	499	487	530	491	531	566	573
9	521	484	525	470	557	544	592	549	594	632
10	457	506	471	511	457	542	529	576	534	577
11	506	456	505	470	509	456	540	528	574	532
12	509	529	477	528	491	533	477	565	552	600
<b>TOTAL</b>	<b>6,139</b>	<b>6,251</b>	<b>6,323</b>	<b>6,443</b>	<b>6,529</b>	<b>6,651</b>	<b>6,735</b>	<b>6,874</b>	<b>6,928</b>	<b>7,001</b>
K-12	6,139	6,251	6,323	6,443	6,529	6,651	6,735	6,874	6,928	7,001
K-5	2,823	2,890	2,941	2,952	3,008	3,027	3,012	2,990	2,999	3,007
6-8	1,323	1,386	1,404	1,512	1,506	1,549	1,585	1,667	1,676	1,652
9-12	1,993	1,975	1,978	1,979	2,015	2,075	2,138	2,217	2,253	2,342



2 Year "Trend" Projection

The 2 Year "Trend" model (Table 9) uses the grade progression ratios from the last two years to project what future enrollments would look like if even more recent patterns were representative of future trends. For the 2 Year "Trend," enrollment is projected to increase from 5,993 students in 2012-13 to 6,298 students in 2017-18, or a 5% increase.

**TABLE 9**  
**2 Year "Trend" Projection Model**  
**Middleton-Cross Plains Area School District**

GRADE	SCHOOL YEAR									
	13-14	14-15	15-16	16-17	17-18	18-19	19-20	20-21	21-22	22-23
K	456	461	435	437	443	443	443	443	443	443
1	474	473	479	452	453	460	460	460	460	460
2	443	484	483	489	461	463	469	469	469	469
3	481	443	484	483	489	461	463	469	469	469
4	460	496	457	500	498	504	476	478	484	484
5	469	462	499	459	502	501	507	478	480	487
6	416	481	474	512	471	515	514	520	490	492
7	476	426	494	487	525	483	528	527	533	503
8	427	465	417	482	476	513	472	516	515	521
9	510	467	509	456	528	520	561	517	565	563
10	469	508	466	507	454	526	519	559	515	563
11	503	465	504	462	503	451	522	514	555	511
12	522	539	498	540	495	539	483	559	551	594
<b>TOTAL</b>	<b>6,105</b>	<b>6,172</b>	<b>6,198</b>	<b>6,265</b>	<b>6,298</b>	<b>6,379</b>	<b>6,416</b>	<b>6,510</b>	<b>6,530</b>	<b>6,561</b>
K-12	6,105	6,172	6,198	6,265	6,298	6,379	6,416	6,510	6,530	6,561
K-5	2,784	2,820	2,837	2,819	2,847	2,832	2,818	2,797	2,806	2,813
6-8	1,319	1,373	1,385	1,481	1,471	1,511	1,514	1,563	1,539	1,516
9-12	2,003	1,979	1,976	1,965	1,980	2,036	2,084	2,149	2,185	2,231



## Kindergarten Trend Projection

For this method we perform an analysis of long-term kindergarten trends to project the number of future kindergarten students, rather than relying upon the traditional birth to kindergarten (B:K) progression ratio. Then, the 5 Year Trend grade progression ratios are used for projecting the other grades (1-12) in the district. For the Kindergarten Trend model (Table 10), enrollment is projected to increase from 5,993 students in 2012-13 to 6,467 students in 2017-18, or an 8% increase over a five year period.

**TABLE 10**  
**Kindergarten Trend Projection Model**  
**Middleton-Cross Plains Area School District**

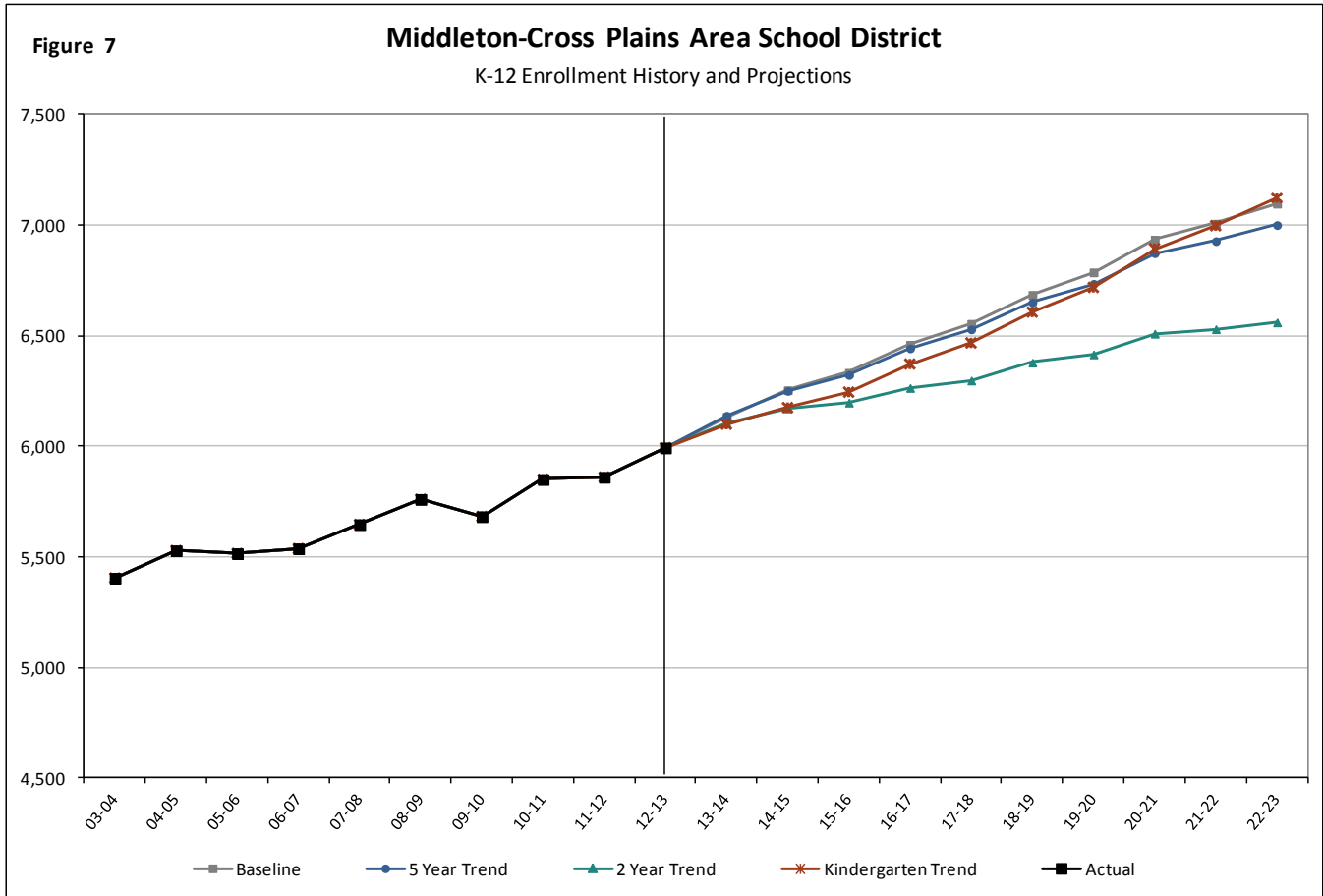
GRADE	13-14	14-15	15-16	16-17	17-18	18-19	19-20	20-21	21-22	22-23
K	447	456	465	474	483	492	501	511	520	529
1	470	459	469	478	487	497	506	515	525	534
2	446	482	472	482	491	501	510	520	529	539
3	485	450	487	476	486	496	505	515	524	534
4	456	496	460	498	487	497	507	517	526	536
5	480	469	510	473	511	500	511	521	531	541
6	415	492	480	523	485	524	513	523	534	544
7	474	424	503	491	534	495	536	524	535	545
8	434	470	421	499	487	530	491	531	520	531
9	521	484	525	470	557	544	592	549	594	581
10	457	506	471	511	457	542	529	576	534	577
11	506	456	505	470	509	456	540	528	574	532
12	509	529	477	528	491	533	477	565	552	600
<b>TOTAL</b>	<b>6,099</b>	<b>6,175</b>	<b>6,245</b>	<b>6,372</b>	<b>6,467</b>	<b>6,607</b>	<b>6,718</b>	<b>6,894</b>	<b>6,997</b>	<b>7,124</b>
K-12	6,099	6,175	6,245	6,372	6,467	6,607	6,718	6,894	6,997	7,124
K-5	2,784	2,813	2,863	2,881	2,946	2,983	3,040	3,098	3,155	3,213
6-8	1,323	1,386	1,404	1,512	1,506	1,549	1,540	1,579	1,589	1,620
9-12	1,993	1,975	1,978	1,979	2,015	2,075	2,138	2,217	2,253	2,291





## Comparison of Projection Models

Figures 7-12 and Tables 11-16 compare the four enrollment projection models broken down by total K-12 district enrollment and by grade groupings (K-5 & K-4, 6-8 & 5-8, and 9-12).

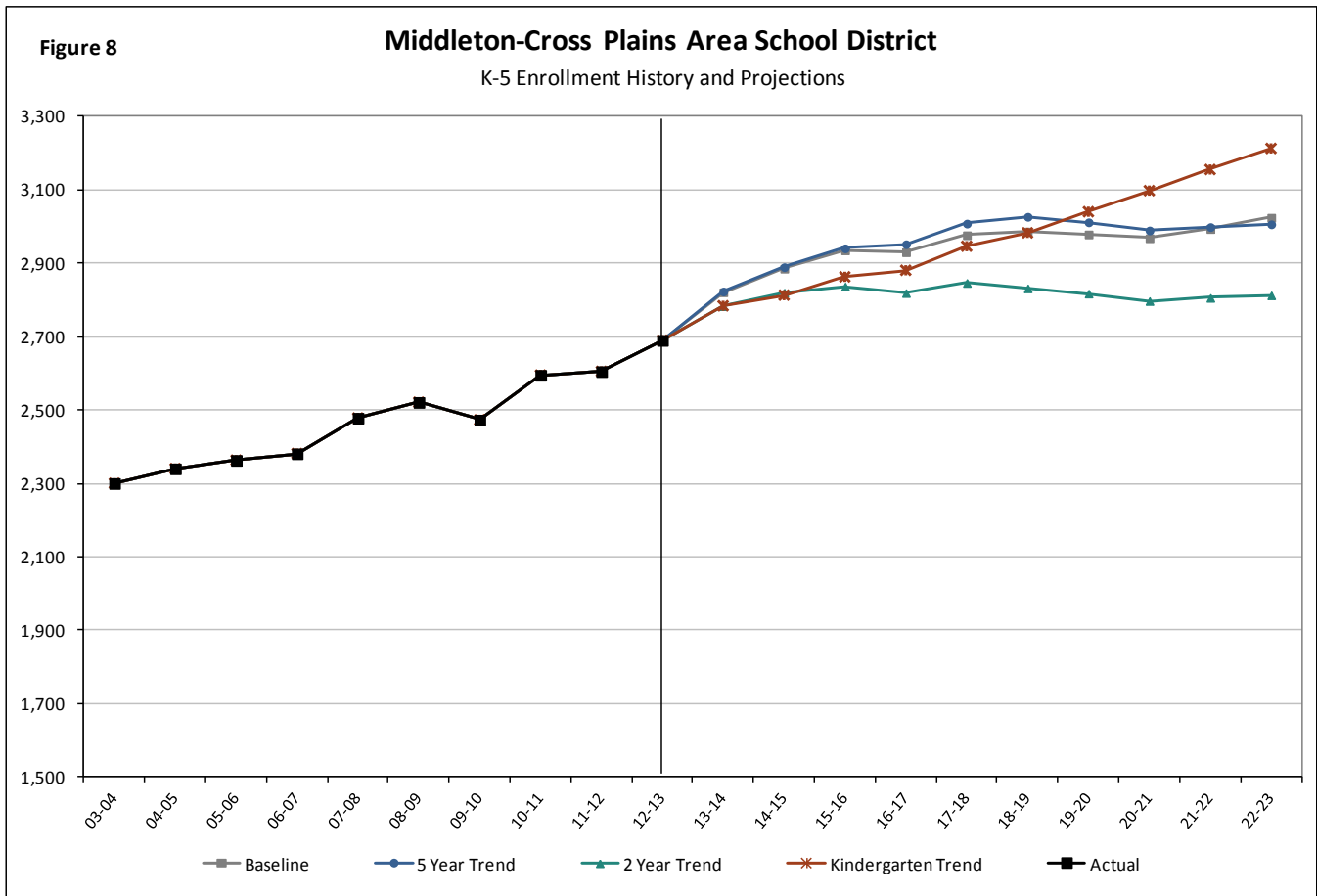


**TABLE 11**  
**Summary of K-12 Enrollment Projections**  
**Middleton-Cross Plains Area School District**

	13-14	14-15	15-16	16-17	17-18	18-19	19-20	20-21	21-22	22-23
Baseline	6,134	6,254	6,333	6,460	6,554	6,685	6,787	6,935	7,007	7,098
5 Year Trend	6,139	6,251	6,323	6,443	6,529	6,651	6,735	6,874	6,928	7,001
2 Year "Trend"	6,105	6,172	6,198	6,265	6,298	6,379	6,416	6,510	6,530	6,561
Kindergarten Trend	6,099	6,175	6,245	6,372	6,467	6,607	6,718	6,894	6,997	7,124

K-12 enrollment for 2012-13 is 5,993. All models project increasing K-12 enrollment with the Baseline model indicating the greatest amount of increase while the 2 Year "Trend" model projects the least amount of increase. K-12 enrollment projections five years from now (2017-2018) forecast a range of enrollment from 6,298 to 6,554.



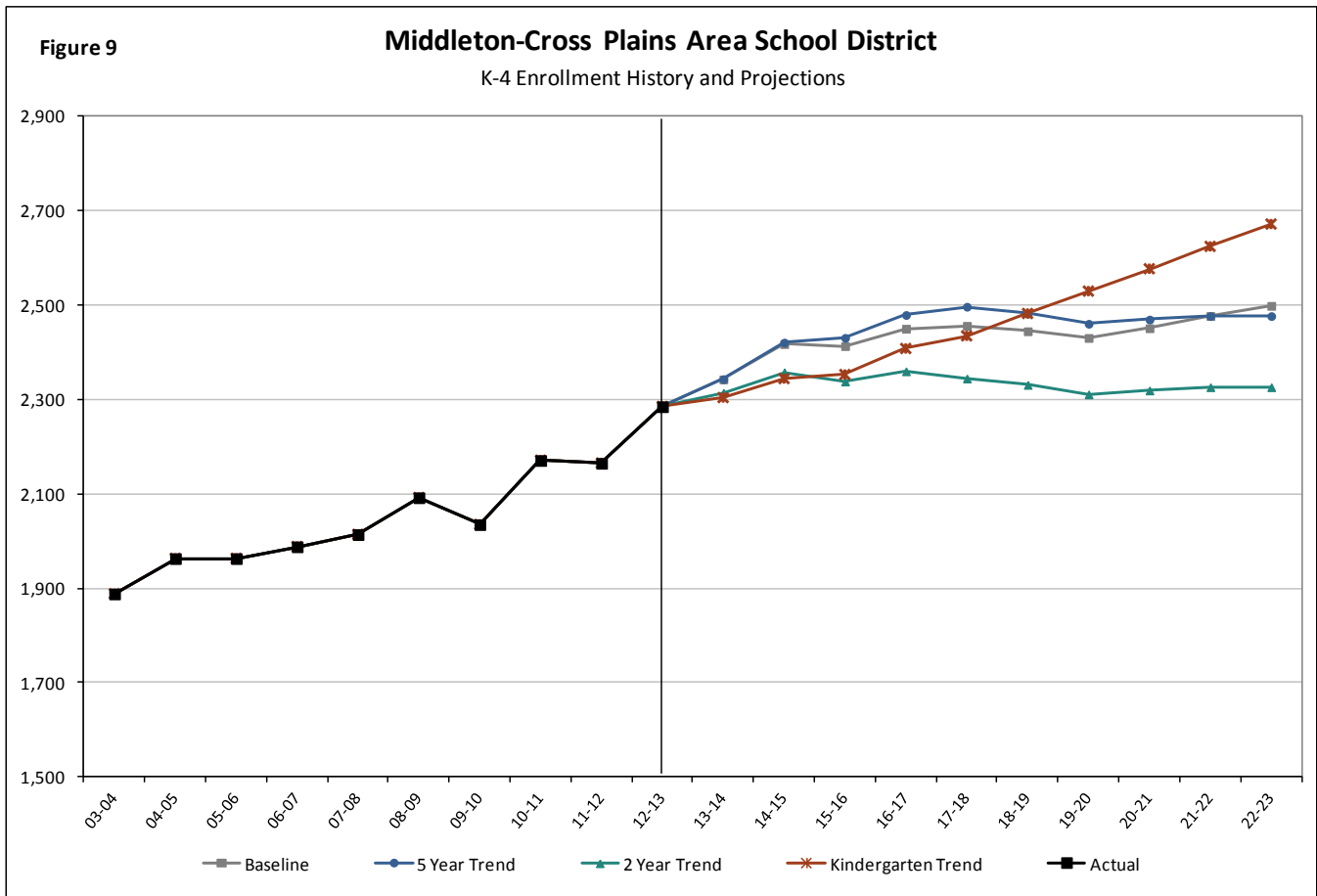


**TABLE 12**  
**Summary of K-5 Enrollment Projections**  
**Middleton-Cross Plains Area School District**

	13-14	14-15	15-16	16-17	17-18	18-19	19-20	20-21	21-22	22-23
Baseline	2,821	2,886	2,935	2,930	2,977	2,987	2,979	2,968	2,994	3,024
5 Year Trend	2,823	2,890	2,941	2,952	3,008	3,027	3,012	2,990	2,999	3,007
2 Year "Trend"	2,784	2,820	2,837	2,819	2,847	2,832	2,818	2,797	2,806	2,813
Kindergarten Trend	2,784	2,813	2,863	2,881	2,946	2,983	3,040	3,098	3,155	3,213

K-5 enrollment for 2012-13 is 2,690. All models project increased K-5 enrollment over the ten year period. The Kindergarten Trend model projects the greatest increase in K-5 enrollment while the 2 Year "Trend" model projects less enrollment increases. K-5 enrollment projections five years from now (2017-2018) forecast a range of enrollment from 2,847 to 3,008. The next page provides the enrollment projections for grades K-4.



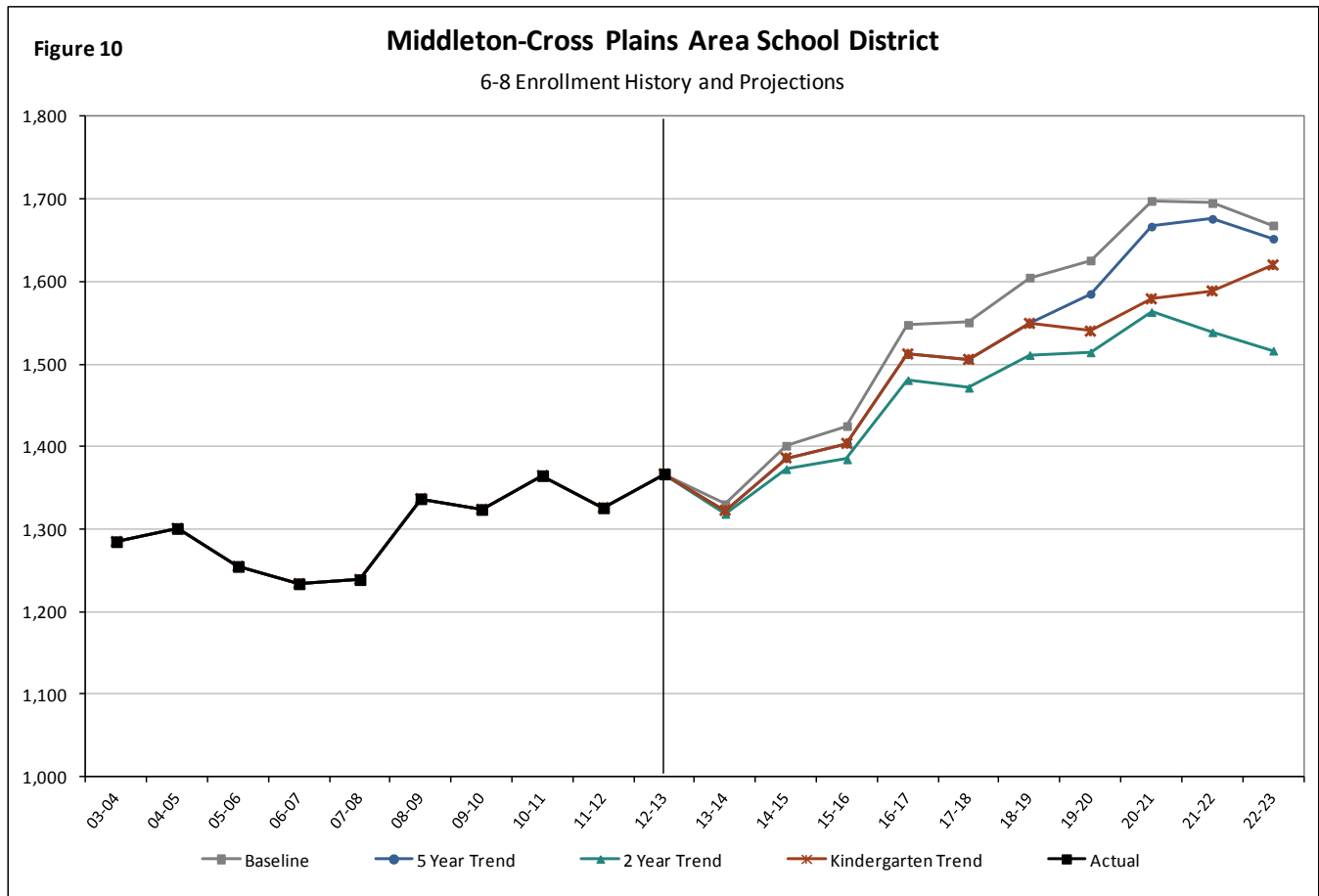


**TABLE 13**  
**Summary of K-4 Enrollment Projections**  
**Middleton-Cross Plains Area School District**

	13-14	14-15	15-16	16-17	17-18	18-19	19-20	20-21	21-22	22-23
Baseline	2,343	2,418	2,414	2,450	2,457	2,445	2,431	2,451	2,477	2,499
5 Year Trend	2,343	2,421	2,431	2,479	2,497	2,482	2,461	2,470	2,477	2,477
2 Year "Trend"	2,315	2,358	2,338	2,360	2,345	2,331	2,311	2,319	2,326	2,326
Kindergarten Trend	2,304	2,344	2,353	2,408	2,435	2,482	2,530	2,577	2,624	2,672

K-4 enrollment for 2012-13 would be 2,285. K-4 enrollment projections five years from now (2017-2018) forecast a range of enrollment from 2,345 to 2,497.



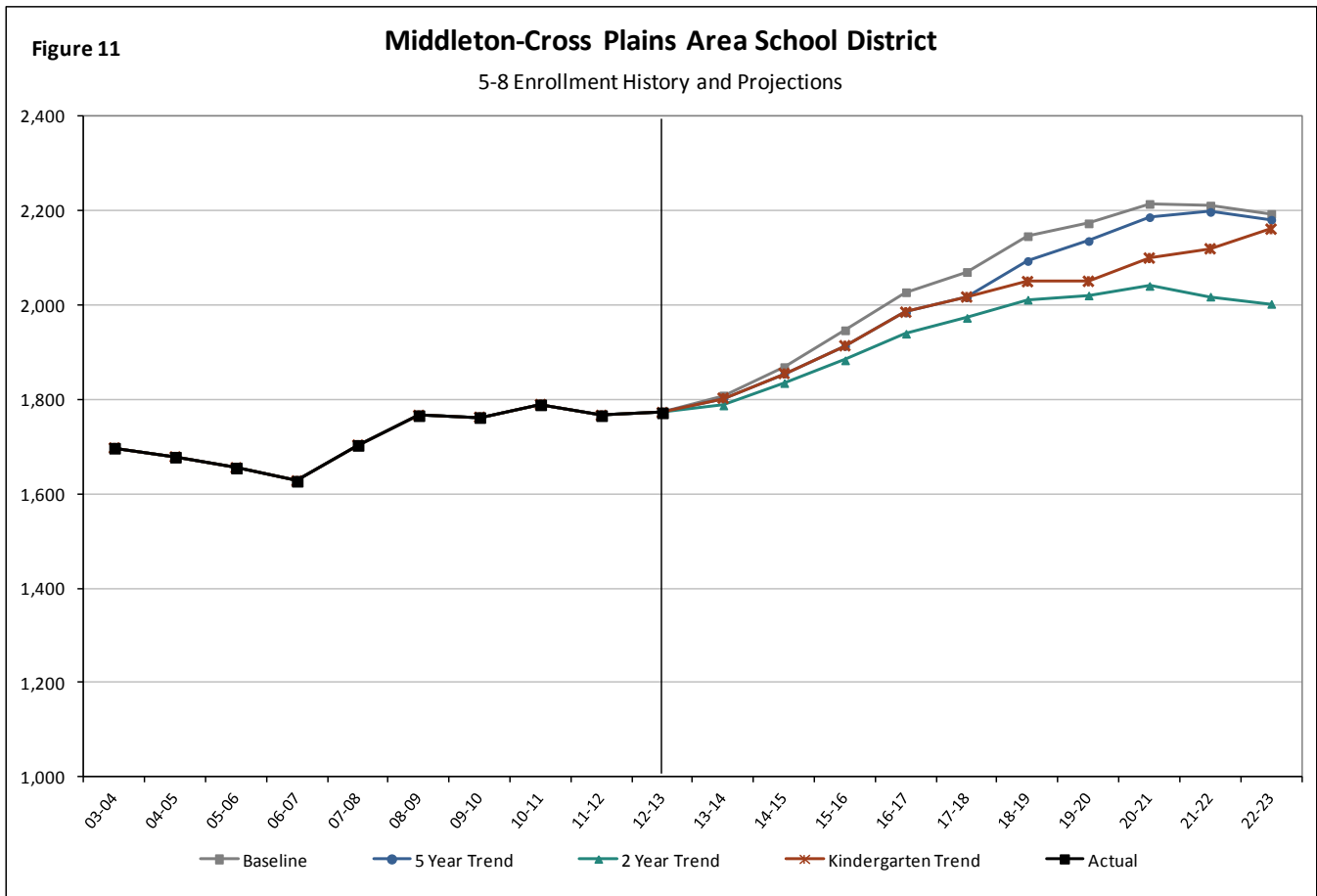


**TABLE 14**  
**Summary of 6-8 Enrollment Projections**  
**Middleton-Cross Plains Area School District**

	13-14	14-15	15-16	16-17	17-18	18-19	19-20	20-21	21-22	22-23
Baseline	1,331	1,401	1,425	1,548	1,551	1,605	1,626	1,698	1,695	1,668
5 Year Trend	1,323	1,386	1,404	1,512	1,506	1,549	1,585	1,667	1,676	1,652
2 Year "Trend"	1,319	1,373	1,385	1,481	1,471	1,511	1,514	1,563	1,539	1,516
Kindergarten Trend	1,323	1,386	1,404	1,512	1,506	1,549	1,540	1,579	1,589	1,620

6-8 enrollment for 2012-13 is 1,367. At the middle school grade level, all models project enrollment decline next year followed by significant enrollment increases. 6-8 enrollment projections five years from now (2017-2018) predict a range of enrollment from 1,471 to 1,551. The next page provides the enrollment projections for grades 5-8.



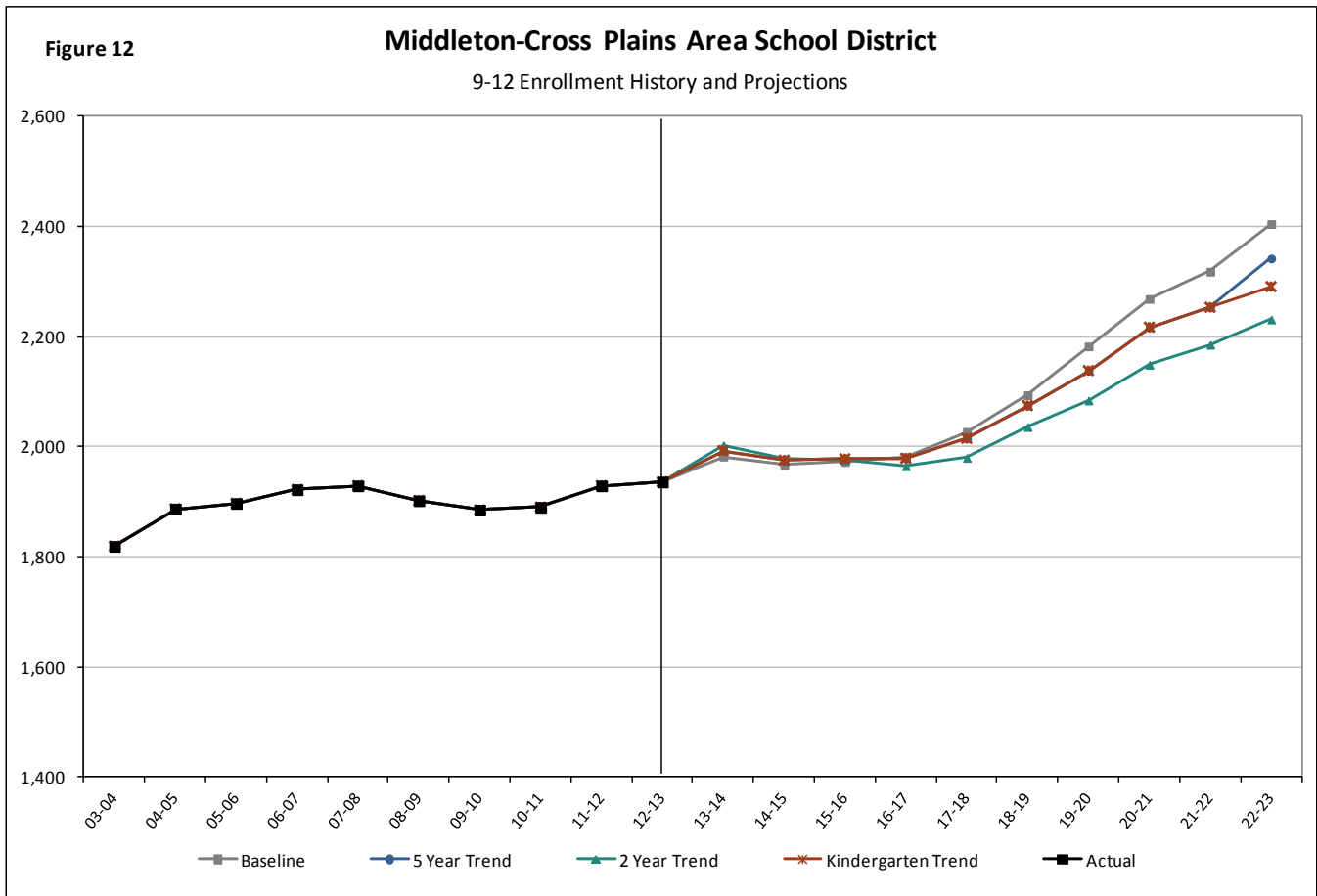


**TABLE 15**  
**Summary of 5-8 Enrollment Projections**  
**Middleton-Cross Plains Area School District**

	13-14	14-15	15-16	16-17	17-18	18-19	19-20	20-21	21-22	22-23
Baseline	1,809	1,869	1,947	2,028	2,071	2,147	2,174	2,215	2,211	2,194
5 Year Trend	1,803	1,855	1,914	1,985	2,017	2,094	2,136	2,187	2,198	2,181
2 Year "Trend"	1,788	1,835	1,883	1,940	1,973	2,012	2,021	2,041	2,018	2,003
Kindergarten Trend	1,803	1,855	1,914	1,985	2,017	2,050	2,050	2,100	2,119	2,161

5-8 enrollment for 2012-13 would be 1,772. 5-8 enrollment projections five years from now (2017-2018) predict a range of enrollment from 1,973 to 2,071.





**TABLE 16**  
**Summary of 9-12 Enrollment Projections**  
**Middleton-Cross Plains Area School District**

	13-14	14-15	15-16	16-17	17-18	18-19	19-20	20-21	21-22	22-23
Baseline	1,982	1,967	1,972	1,982	2,027	2,094	2,183	2,269	2,318	2,405
5 Year Trend	1,993	1,975	1,978	1,979	2,015	2,075	2,138	2,217	2,253	2,342
2 Year "Trend"	2,003	1,979	1,976	1,965	1,980	2,036	2,084	2,149	2,185	2,231
Kindergarten Trend	1,993	1,975	1,978	1,979	2,015	2,075	2,138	2,217	2,253	2,291

9-12 enrollment for 2012-13 is 1,936. At the high school level, all projection models forecast increased enrollment next year followed by steady enrollment in the near term. More significant increase in enrollment will occur over time. 9-12 enrollment projections five years from now (2017-2018) project a range of enrollment from 1,980 to 2,027.



## Past Projections Analysis

The Applied Population Laboratory completes enrollment projection analyses for the Middleton-Cross Plain Area School District on an annual basis, allowing us to compare past projections to recent district enrollment. Tables A-D provides past projections from last fall with current enrollment for the 2012-13 school year.

**TABLE A**  
**Comparison of Actual Enrollments (2012-13) with Projected Enrollment (2011-12)**  
**Middleton-Cross Plains Area School District**

Grade	2012-13 Enrollment	Baseline Model		5 Year Trend Model		2 Year "Trend" Model	
		2011-12	Difference	2011-12	Difference	2011-12	Difference
K	457	451	-6	458	1	429	-28
1	434	429	-5	431	-3	435	1
2	481	469	-12	473	-8	471	-10
3	446	459	13	449	3	446	0
4	467	447	-20	442	-25	449	-18
5	405	424	19	429	24	434	29
6	464	460	-4	452	-12	454	-10
7	437	431	-6	430	-7	430	-7
8	466	472	6	472	6	461	-5
9	470	485	15	482	12	479	9
10	507	480	-27	479	-28	482	-25
11	487	495	8	492	5	493	6
12	472	458	-14	469	-3	482	10
<b>TOTAL</b>	<b>5,993</b>	<b>5,960</b>	<b>-33</b>	<b>5,958</b>	<b>-35</b>	<b>5,945</b>	<b>-48</b>
K-12	5,993	5,960	-33	5,958	-35	5,945	-48
K-5	2,690	2,679	-11	2,682	-8	2,664	-26
6-8	1,367	1,362	-5	1,353	-14	1,345	-22
9-12	1,936	1,918	-18	1,922	-14	1,936	0

**TABLE B**  
**Projections Error**  
**Middleton-Cross Plains Area School District**

K-12 Enrollment		
	number	percent
Actual (2012/13)	5,993	
Baseline	5,960	-0.56%
5 Year Trend	5,958	-0.59%
2 Year "Trend"	5,945	-0.80%

6-8 Enrollment		
	number	percent
Actual (2012/13)	1,367	
Baseline	1,362	-0.34%
5 Year Trend	1,353	-0.99%
2 Year "Trend"	1,345	-1.60%

K-5 Enrollment		
	number	percent
Actual (2012/13)	2,690	
Baseline	2,679	-0.42%
5 Year Trend	2,682	-0.29%
2 Year "Trend"	2,664	-0.98%

9-12 Enrollment		
	number	percent
Actual (2012/13)	1,936	
Baseline	1,918	-0.91%
5 Year Trend	1,922	-0.73%
2 Year "Trend"	1,936	0.01%



**TABLE C**  
**Comparison of Actual Enrollments (2012-13) with Projected Enrollment (2011-12)**  
**Middleton-Cross Plains Area School District**

Grade	2012-13	Kindergarten (10 yr) Model		Kindergarten (5 yr) Model		Last Year Pattern Model	
	Enrollment	2011-12	Difference	2011-12	Difference	2011-12	Difference
K	457	429	-28	434	-23	409	-48
1	434	429	-5	431	-3	432	-2
2	481	469	-12	473	-8	461	-20
3	446	459	13	449	3	435	-11
4	467	447	-20	442	-25	432	-35
5	405	424	19	429	24	423	18
6	464	460	-4	452	-12	438	-26
7	437	431	-6	430	-7	426	-11
8	466	472	6	472	6	459	-7
9	470	485	15	482	12	459	-11
10	507	480	-27	479	-28	486	-21
11	487	495	8	492	5	489	2
12	472	458	-14	469	-3	497	25
<b>TOTAL</b>	<b>5,993</b>	<b>5,938</b>	<b>-55</b>	<b>5,933</b>	<b>-60</b>	<b>5,846</b>	<b>-147</b>
K-12	5,993	5,938	-55	5,933	-60	5,846	-147
K-5	2,690	2,657	-33	2,658	-32	2,592	-98
6-8	1,367	1,362	-5	1,353	-14	1,323	-44
9-12	1,936	1,918	-18	1,922	-14	1,931	-5

**TABLE D**  
**Projections Error**  
**Middleton-Cross Plains Area School District**

K-12 Enrollment		
	number	percent
Actual (2012/13)	5,993	
Kindergarten (10 yr)	5,938	-0.91%
Kindergarten (5 yr)	5,933	-1.00%
Last Year Pattern	5,846	-2.45%

6-8 Enrollment		
	number	percent
Actual (2012/13)	1,367	
Kindergarten (10 yr)	1,362	-0.34%
Kindergarten (5 yr)	1,353	-0.99%
Last Year Pattern	1,323	-3.20%

K-5 Enrollment		
	number	percent
Actual (2012/13)	2,690	
Kindergarten (10 yr)	2,657	-1.21%
Kindergarten (5 yr)	2,658	-1.21%
Last Year Pattern	2,592	-3.66%

9-12 Enrollment		
	number	percent
Actual (2012/13)	1,936	
Kindergarten (10 yr)	1,918	-0.91%
Kindergarten (5 yr)	1,922	-0.73%
Last Year Pattern	1,931	-0.25%





Table E compares past projections of the last four years with the current enrollment for the 2012-13 school year. The percent difference allows the district to assess which projection model has been more reliable from one year to the next. Projection models are more accurate in the near term.

TABLE E

Comparison of 2012-13 Actual Enrollment with Previous Projections  
Middleton-Cross Plains Area School District

Projection Year	K-12 Enrollment			
	2008	2009	2010	2011
Actual (2012-13)	5,993	5,993	5,993	5,993
Baseline	6,241	5,960	6,081	5,960
5 Year Trend	6,256	5,896	6,108	5,958
2 Year "Trend"	6,588	5,855	5,993	5,945
Kindergarten Trend	6,139	5,878	6,126	5,933

Percent Difference between Actual and Projected  
Middleton-Cross Plains Area School District

Projection Year	K-12 Enrollment			
	2008	2009	2010	2011
Baseline	4.13%	-0.55%	1.47%	-0.56%
5 Year Trend	4.39%	-1.61%	1.93%	-0.59%
2 Year "Trend"	9.94%	-2.31%	0.00%	-0.80%
Kindergarten Trend	2.44%	-1.91%	2.21%	-1.00%

Projection Year	K-5 Enrollment			
	2008	2009	2010	2011
Actual (2012-13)	2,690	2,690	2,690	2,690
Baseline	2,799	2,689	2,740	2,679
5 Year Trend	2,823	2,647	2,758	2,682
2 Year "Trend"	3,050	2,676	2,675	2,664
Kindergarten Trend	2,706	2,629	2,776	2,658

Projection Year	K-5 Enrollment			
	2008	2009	2010	2011
Baseline	4.04%	-0.02%	1.86%	-0.42%
5 Year Trend	4.95%	-1.60%	2.54%	-0.29%
2 Year "Trend"	13.37%	-0.53%	-0.57%	-0.98%
Kindergarten Trend	0.61%	-2.27%	3.18%	-1.21%

Projection Year	6-8 Enrollment			
	2008	2009	2010	2011
Actual (2012-13)	1,367	1,367	1,367	1,367
Baseline	1,425	1,338	1,383	1,362
5 Year Trend	1,410	1,307	1,379	1,353
2 Year "Trend"	1,457	1,269	1,366	1,345
Kindergarten Trend	1,410	1,307	1,379	1,353

Projection Year	6-8 Enrollment			
	2008	2009	2010	2011
Baseline	4.22%	-2.09%	1.19%	-0.34%
5 Year Trend	3.15%	-4.36%	0.88%	-0.99%
2 Year "Trend"	6.55%	-7.19%	-0.04%	-1.60%
Kindergarten Trend	3.15%	-4.36%	0.88%	-0.99%

Projection Year	9-12 Enrollment			
	2008	2009	2010	2011
Actual (2012-13)	1,936	1,936	1,936	1,936
Baseline	2,017	1,932	1,957	1,918
5 Year Trend	2,023	1,942	1,971	1,922
2 Year "Trend"	2,082	1,910	1,952	1,936
Kindergarten Trend	2,023	1,942	1,971	1,922

Projection Year	9-12 Enrollment			
	2008	2009	2010	2011
Baseline	4.20%	-0.19%	1.11%	-0.91%
5 Year Trend	4.48%	0.31%	1.81%	-0.73%
2 Year "Trend"	7.56%	-1.34%	0.82%	0.01%
Kindergarten Trend	4.48%	0.31%	1.81%	-0.73%

Table F shows a comparison of the kindergarten enrollment projections by model completed for the last five years. The highlighted projection is the most similar to the actual enrollment. No one model has provided a more reliable projection for the kindergarten enrollment from year to year.

TABLE F

Comparison of Kindergarten Enrollment Projections  
Middleton-Cross Plains Area School District

	08-09	09-10	10-11	11-12	12-13
Actual	434	419	444	418	457
Baseline	371	435	444	445	451
5 Year Trend	385	443	433	450	458
2 Year "Trend"	397	473	467	434	429
Kindergarten Trend	389	408	416	448	434



## Conclusions

---

These district-level enrollment projections are based on models that incorporate recent past and current demographic information as well as the district's own enrollment data and assumptions about future housing development in the school district area. Because most of the students in the district's schools over the next few years have already been born or are already in school, and because their grade progression from one year to another is highly predictable, the total district-level projections should be viewed as having high accuracy over the next few years. After a few years, and increasingly for the lower elementary grades, actual enrollment figures will likely deviate from these projections by ever increasing amounts. The reason for this is that birth trends, in-migration of pre-school age children, and transfers into the district are more difficult to predict and therefore this makes meaningful incorporation into enrollment projections a challenge. As with nearly all types of forecasts, accuracy in these enrollment projections decreases over time.

In sum, the demographic information provided in this school enrollment projections report points to increased enrollment in the Middleton-Cross Plain Area School District over the next decade. All models project K-12 enrollment growth with the Baseline model indicating the greatest increase while the 2 Year "Trend" model projects the least amount of increase. The district will continue to experience increasing enrollment in grades K-5 in the near term followed by steadier enrollment. The district is likely to see increasing enrollment in grades 6-8 as the larger elementary grades progress to the middle school. While enrollment in grades 9-12 will see steady enrollment in the near term followed by increasing enrollment in the long term. The number of births, kindergarten enrollment, and new housing starts all point to continued growth in the district.

Because the projections found in this report incorporate the consequences of migration to and from the district, any significant and sustained interruption of current or recent past migration patterns will erode these models' accuracy from the initiation point of the new pattern. The various projection models provide a realistic range of migration and transfer effects on the school district. Enrollment growth should be closely monitored for the next few years, and compared with these projections, to determine the trajectory of future growth. This type of monitoring program might help the district to determine which of the models seems to be the most realistic to use for planning purposes.

